

**HOLE LOCATIONS FOR MOUNTING IN H950 AND H967 CABINETS**

AVAILABLE SPACE BENEATH RL01	MOUNTING HOLES (FROM DATUM HOLE)	
	LOWER	UPPER
5.25	12	15
10.50	21	24
15.75	30	33
21.00	39	42
26.25	48	51
31.50	57	60

7. CONT.  
 TO REMOVE DRIVE, EXTEND SLIDE FULLY, REMOVE DRIVE, RELEASE LATCHES AND LIFT OFF.  
 B. FOR LAST DRIVE IN A SYSTEM IF CABLE PLUGS INTO EITHER SOCKET, TERMINATOR (SUPPLIED WITH CONTROLLER) PLUGS INTO THE OTHER.

**NOTES:**

1. CHASSIS ARE SHIPPED CONFIGURED FOR 110V AND NOMINAL VOLTAGE RANGE. FOR 220V OPERATION REMOVE TWO SCREWS FROM "VOLTAGE SELECTOR" COVER, WITHDRAW THE COVER, AND RE-INSERT IT TURNED UPSIDE DOWN. AFTER INSERTION, "220" MUST BE SHOWING THRU THE SMALL WINDOW. REPLACE THE TWO SCREWS, CUT OFF 110V PLUG ON THE POWER CORD, REPLACE BY 220V PLUG (ITEM 22). FOR COLOR CODING SEE DETAIL "C", SHEET 4.
2. "LOW LINE" AND "NOMINAL LINE" ARE DEFINED ON COVER OF "VOLTAGE RANGE SELECTOR" FOR LOW LINE VOLTAGE OPERATION REMOVE TWO SCREWS FROM "VOLTAGE RANGE SELECTOR" COVER, WITHDRAW THE COVER AND RE-INSERT IT TURNED UPSIDE DOWN. AFTER INSERTION, "LOW" MUST BE SHOWING THRU THE SMALL WINDOW. REPLACE THE TWO SCREWS.
3. WHEN AN RL01-AK IS ORDERED IN CONJUNCTION WITH H9500, H9501, H9502, H9503, H9600, H9601, H9602, H9603 INTERLOCK KIT(S) (REF 21) MUST BE ORDERED AND INSTALLED.
4. WHEN AN RL01-AK IS ORDERED IN CONJUNCTION WITH A H9503/ H9603 THE TRIM PIECES (H9514-B) MUST BE ORDERED.
5. WHEN AN RL01-AK IS ORDERED IN CONJUNCTION WITH A H9501/ H9601 TRIM PIECES (H9514-A) MUST BE ORDERED.

6. TO ATTACH SHIPPING BRACKET (ITEM 7) REMOVE TWO SCREWS AND TWO LOCKWASHERS FROM ONE SIDE OF THE POWER PANEL ON THE REAR OF DISK DRIVE (ITEM 1), POSITION A SHIPPING BRACKET TO DETERMINE LOCATION OF "U" NUT (ITEM 13) AND ATTACH BRACKET USING ORIGINAL SCREWS AND LOCKWASHERS AND ITEMS 12 AND 9 (AS SHOWN IN DETAIL "D"). NEXT REMOVE THE SCREWS AND ATTACH THE BRACKET ON THE OTHER SIDE.
7. TO MOUNT RL01 IN CABINET:
  - A. MOUNT BRACKETS AND SLIDES TO UPRIGHTS.
  - B. EXTEND SLIDES AS FAR AS POSSIBLE BY RELEASING CATCHES. (SEE DETAIL "F" SHT 4)
  - C. PLACE DRIVE ON SLIDES AND PUSH BACK UNTIL ENDS OF RAILS FIT UNDER TABS ON SLIDES AND LATCHES ENGAGE.
  - D. SECURE DRIVE TO SLIDES USING SCREWS SUPPLIED. (SEE DETAIL "E" SHT 4)

REF	DESCRIPTION	DWG. PART NO.	ITEM NO.
REF	INTERLOCK KIT(S)	A-PL-H9504-2-0	21
REF	PLUG 220V POWER	9008853-00	20
REF	SCREW SLANTED TOR. NO. 8 X .50	9006033-04	19
REF	TIE CABLE	9007031-00	18
REF	WASHER FLAT #10	9006668-00	17
REF	WASHER FLAT #6	90066653-00	16
REF	CLAMP CABLE .75 NOM	9007089-00	15
REF	CLAMP CABLE .375 NOM	9007083-00	14
REF	NUT, U SHAPED RETAINING 70-32	9007786-00	13
REF	WASHER LOCK EXT. TOOTH #10	9007651-00	12
REF	WASHER LOCK EXT. TOOTH #6	9007649-00	11
REF	SCREW PHL. PAN HD #6-32 X .31	9006021-01	10
REF	SCREW PHL. PAN HD #10-32 X .50	9006073-01	9
REF	BRACKET CABLE SUPPORT	C-IA-7419857-0-0	8
REF	BRACKET SHIPPING RL01	C-MD-7419856-0-0	7
REF	BAR NUT	C-MD-7419262-0-0	6
REF	BRACKET CHASSIS SLIDE	D-MD-7419261-0-0	5
REF	CHASSIS/SLIDE	A-PS-1213686-0-0	4
REF	1/0 CABLE ASSY (10 FEET)	E-IA-702122-10	3
1	RL01 DATA CARTRIDGE	A-PL-RL01K-DC-0	2
1	RL01 DISK DRIVE	A-PL-RL01-A	1

UNLESS OTHERWISE SPECIFIED DIMENSIONS ARE IN INCHES		NOMINAL DIMENSION RANGE INCHES	
ANGLES	CLASS OF ACCURACY	1/8"	1/16"
30°	25	15	10
SURFACE QUALITY	FINISH	125	63
IN	MEDIUM	400	200
MICROINCHES	PREFERRED	1.250	0.625
		1.000	0.500

THIRD ANGLE PROJECTION

REMOVE BURRS AND BREAK SHARP CORNERS

DO NOT SCALE DWG

NEXT HIGHER ASSY.

MATERIAL: 303 STAINLESS STEEL

FINISH: POLISHED

DRN: [Signature]

CHKD: [Signature]

ENG: [Signature]

PROJ. ENG: [Signature]

PROD. [Signature]

FIRST USED ON: RL01

TITLE: DISK DRIVE MTG. KIT & CARTRIDGE

SCALE: 1:1

SHEET: 1 OF 4

THIS DRAWING AND SPECIFICATIONS, HEREIN, ARE THE PROPERTY OF DIGITAL EQUIPMENT CORPORATION AND SHALL NOT BE REPRODUCED OR COPIED OR USED IN WHOLE OR IN PART AS THE BASIS FOR THE MANUFACTURE OR SALE OF GOODS WITHOUT WRITTEN PERMISSION.  
COPYRIGHT © 1977 DIGITAL EQUIPMENT CORPORATION

NOTES: (CONT.)

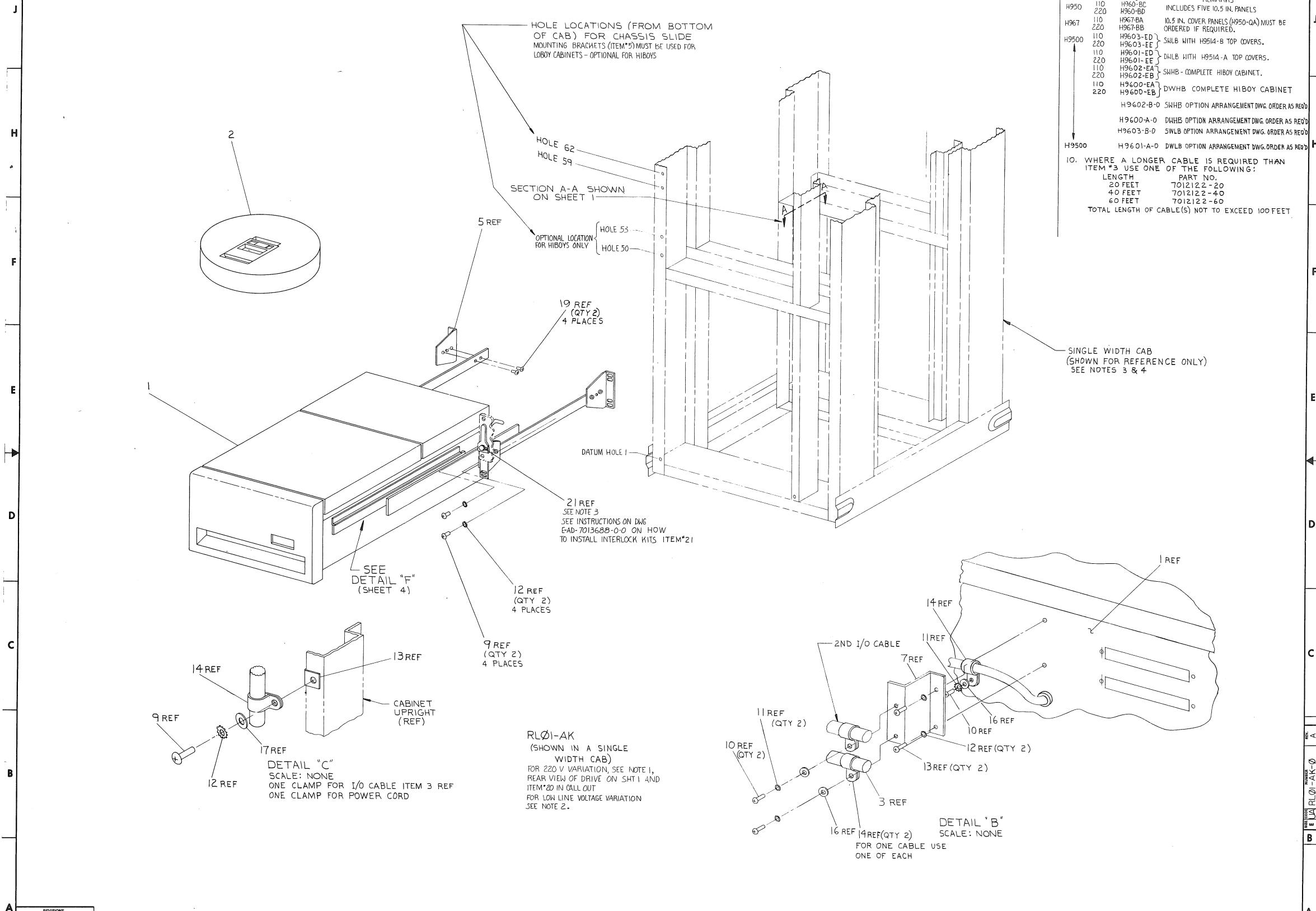
9. CABINET OPTIONS INCLUDE SKINS, DOORS, COVERS, TRIM, & PWR CONTROLLERS.

TYPE	VOLTAGE	DWG	REMARKS
H950	110	H960-BC	INCLUDES FIVE 10.5 IN. PANELS
	220	H960-BD	
H967	110	H967-BA	10.5 IN. COVER PANELS (H950-QA) MUST BE ORDERED IF REQUIRED.
	220	H967-BB	
H9500	110	H9603-ED	SHLB WITH H9514-B TOP COVERS.
	220	H9603-EE	
	110	H9601-ED	DHLB WITH H9514-A TOP COVERS.
	220	H9601-EE	
	110	H9602-EA	SHHB - COMPLETE HIBOY CABINET.
	220	H9602-EB	
	110	H9600-EA	DWHB - COMPLETE HIBOY CABINET
	220	H9600-EB	
		H9602-B-D	SHHB OPTION ARRANGEMENT DWG. ORDER AS REQ'D
		H9600-A-D	DHHB OPTION ARRANGEMENT DWG. ORDER AS REQ'D
		H9603-B-D	SWLB OPTION ARRANGEMENT DWG. ORDER AS REQ'D
H9500		H9601-A-D	DWLB OPTION ARRANGEMENT DWG. ORDER AS REQ'D

10. WHERE A LONGER CABLE IS REQUIRED THAN ITEM #3 USE ONE OF THE FOLLOWING:

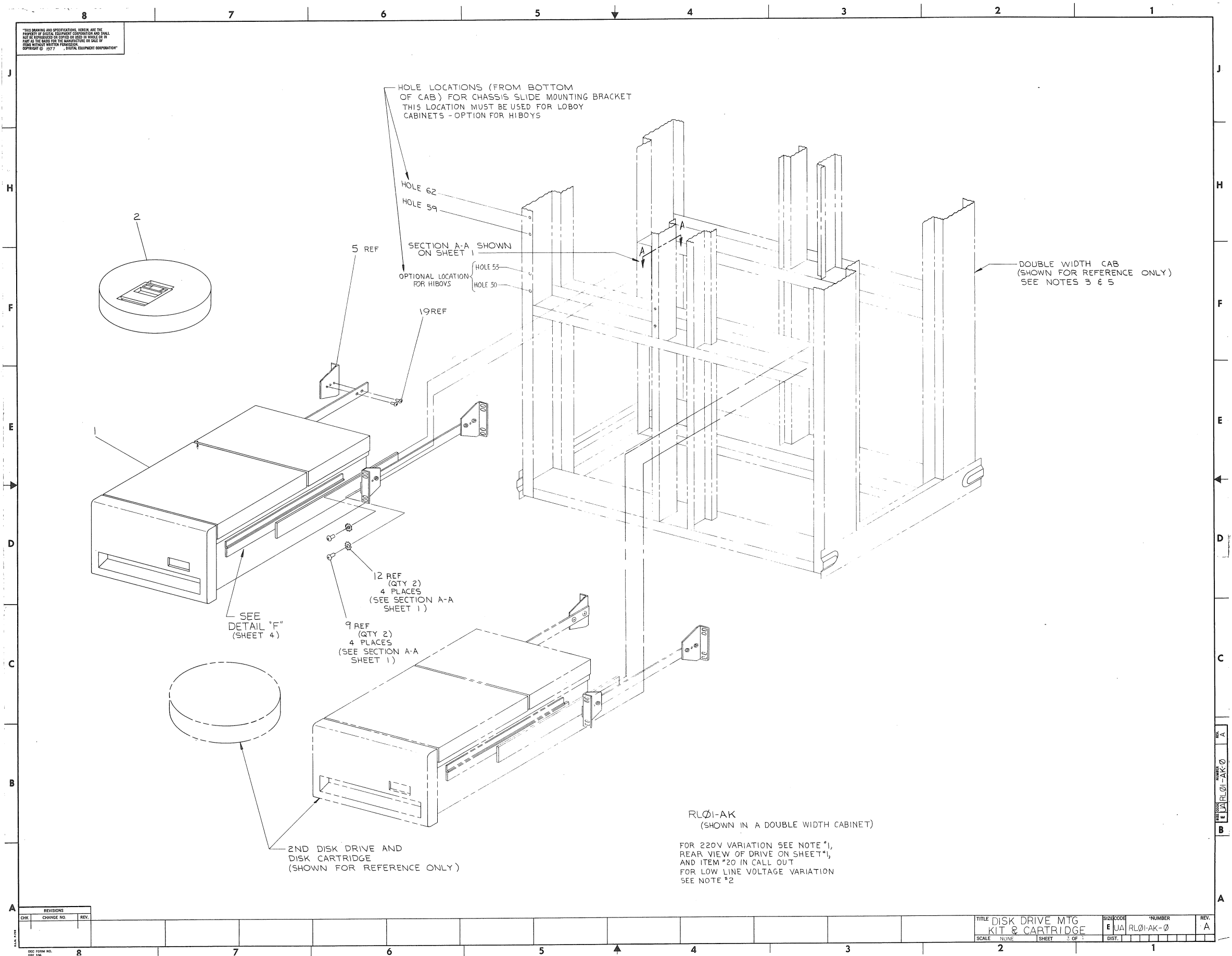
LENGTH	PART NO.
20 FEET	7012122-20
40 FEET	7012122-40
60 FEET	7012122-60

TOTAL LENGTH OF CABLE(S) NOT TO EXCEED 100 FEET



REVISIONS		
CHK	CHANGE NO.	REV.

THIS DRAWING AND SPECIFICATIONS, HEREIN, ARE THE PROPERTY OF DIGITAL EQUIPMENT CORPORATION AND SHALL NOT BE REPRODUCED OR COPIED OR USED IN WHOLE OR IN PART AS THE BASIS FOR THE MANUFACTURE OR SALE OF ITEMS WITHOUT WRITTEN PERMISSION.  
 COPYRIGHT © 1977 DIGITAL EQUIPMENT CORPORATION

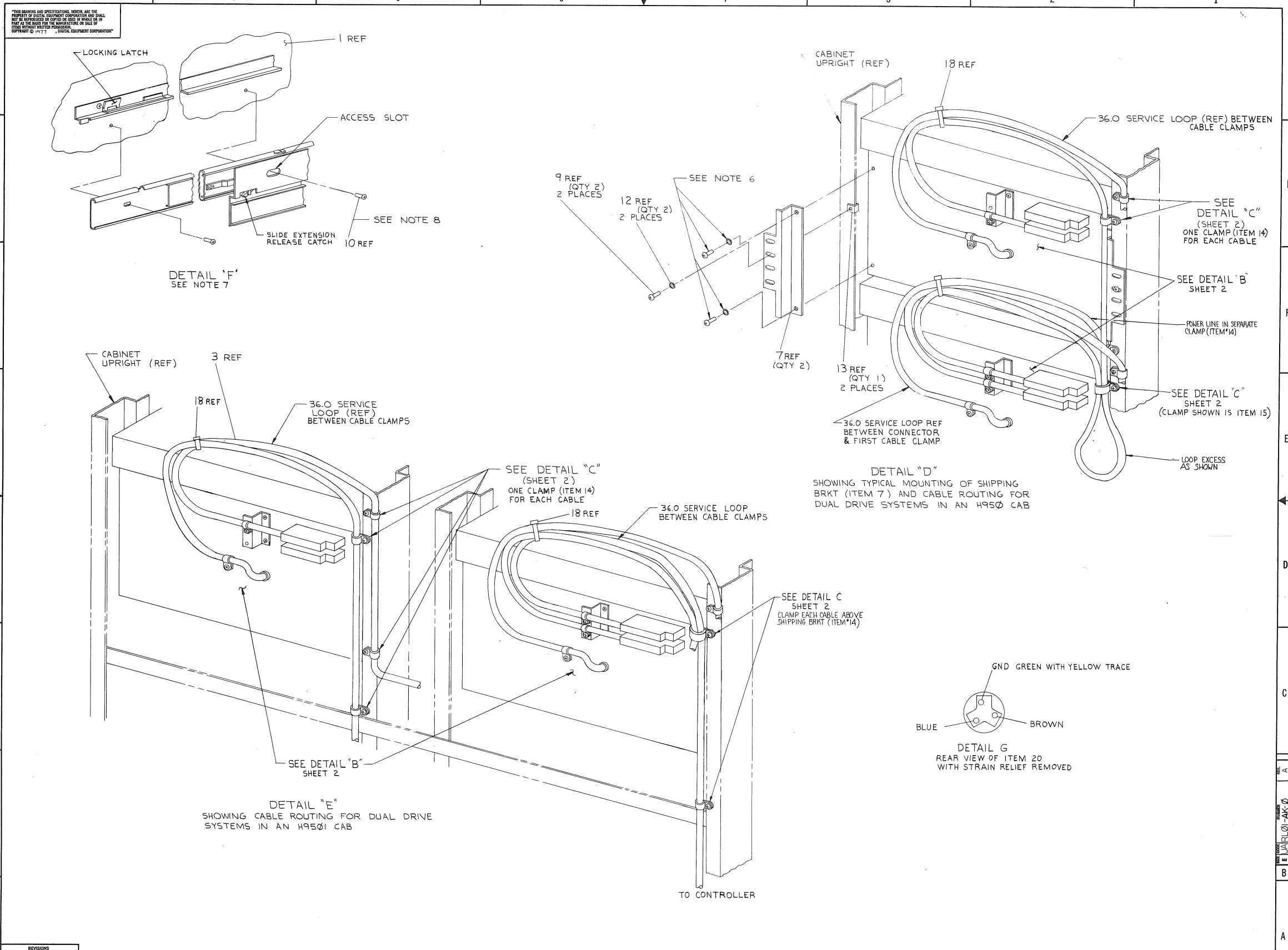


RL01-AK  
 (SHOWN IN A DOUBLE WIDTH CABINET)

FOR 220V VARIATION SEE NOTE #1,  
 REAR VIEW OF DRIVE ON SHEET #1,  
 AND ITEM #20 IN CALL OUT  
 FOR LOW LINE VOLTAGE VARIATION  
 SEE NOTE #2

REVISIONS		
CHK	CHANGE NO.	REV.

TITLE DISK DRIVE MTG KIT & CARTRIDGE		SIZE CODE E	NUMBER UA RL01-AK-0	REV. A
SCALE NONE	SHEET 2 OF 3	DIST.		



REVISIONS		
CHK	CHANGE NO.	REV.