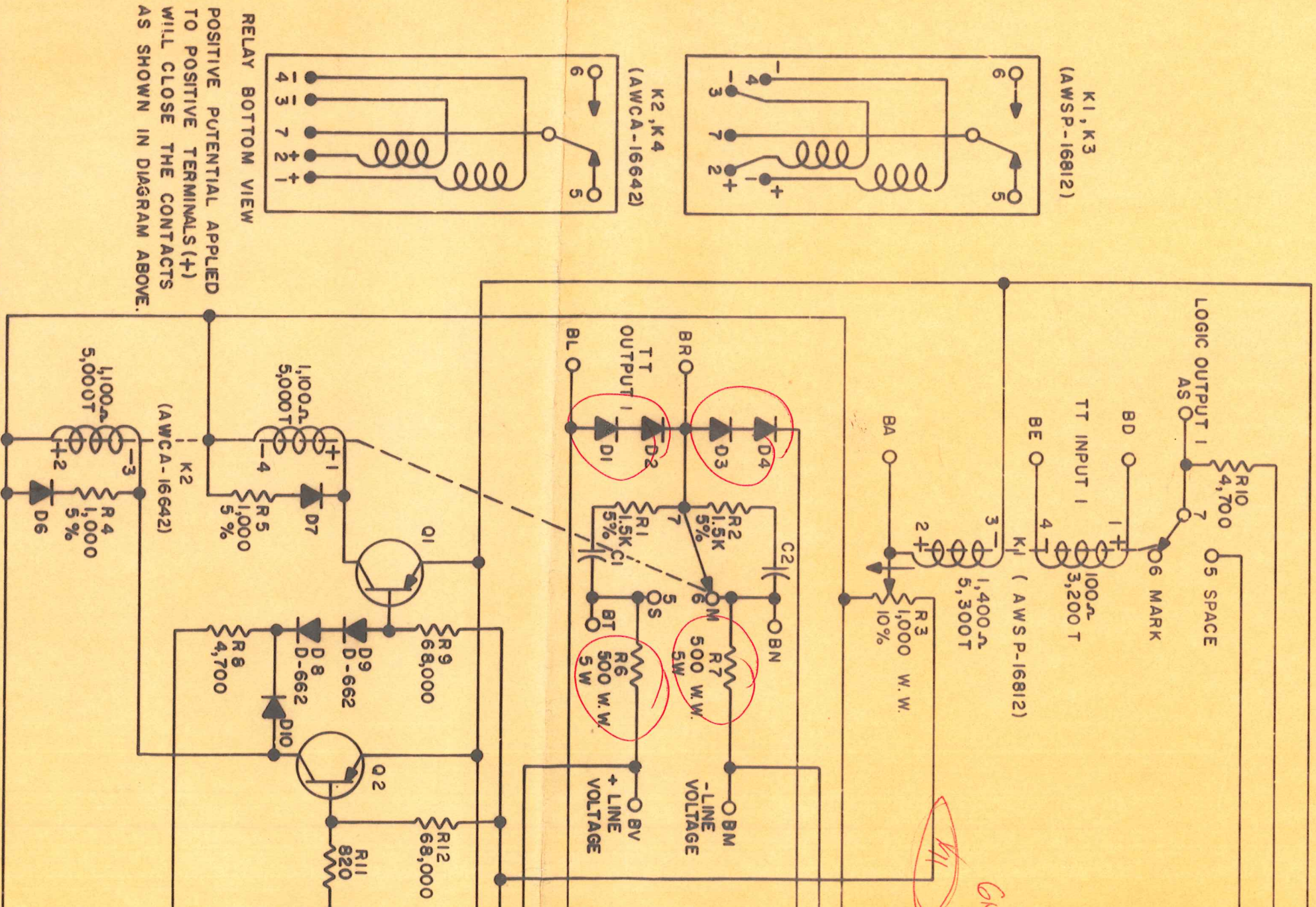


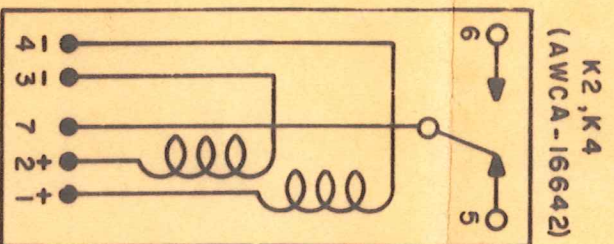
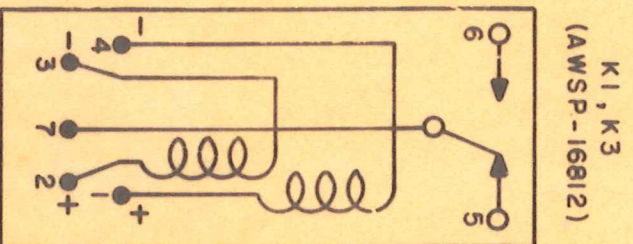
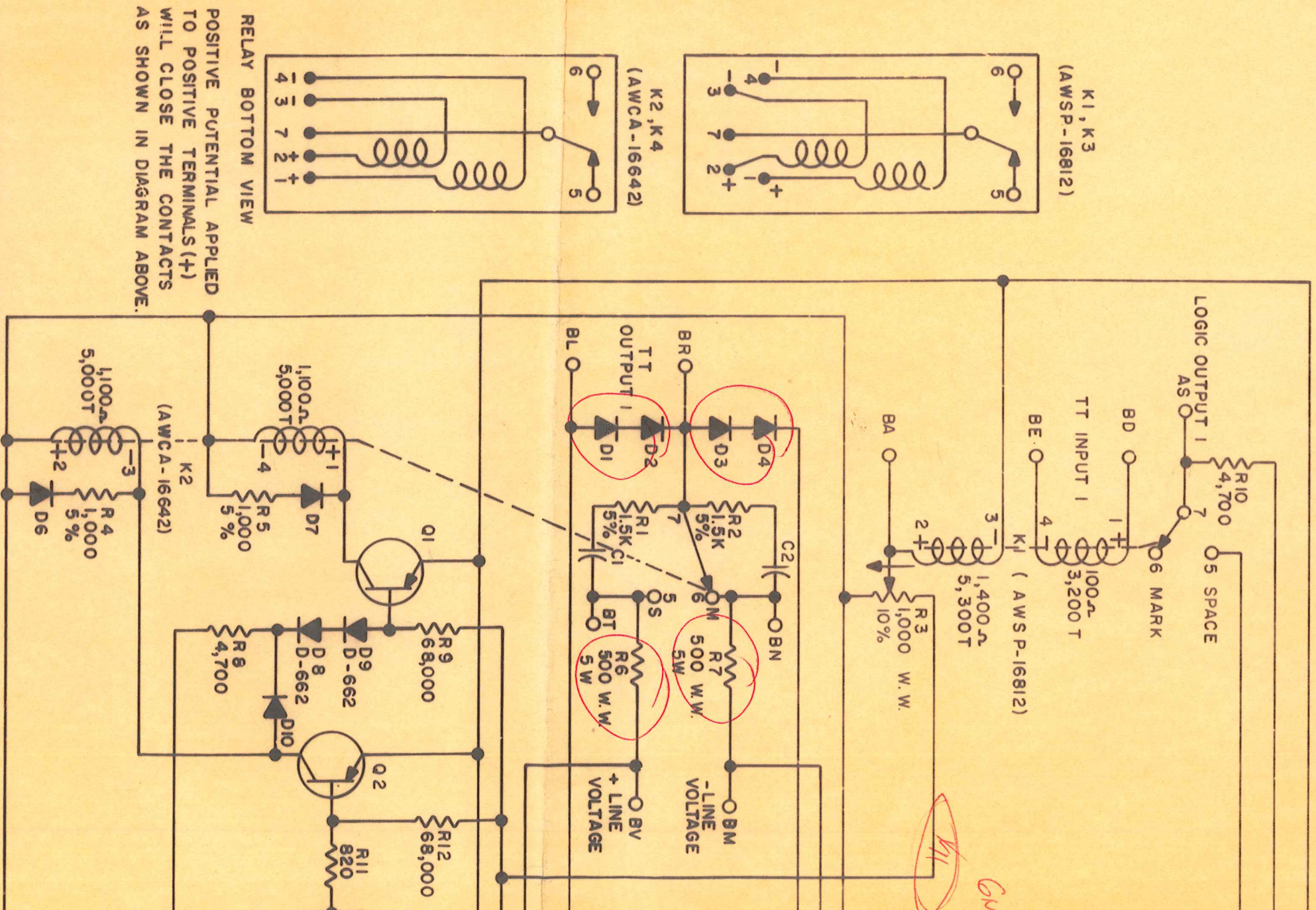
THIS SCHEMATIC IS FURNISHED ONLY FOR TEST AND MAINTENANCE PURPOSES. THE CIRCUITS ARE PROPRIETARY IN NATURE AND SHOULD BE TREATED ACCORDINGLY. COPYRIGHT 1965 BY DIGITAL EQUIPMENT CORPORATION



UNLESS OTHERWISE INDICATED:
 TRANSISTORS ARE 2N398 A
 CAPACITORS ARE .0022 MFD; 220V
 RESISTORS ARE 1/4W, 10%
 DIODES ARE D-670
 R6, R7, R20, R21 ARE SFRAGUE 423E 5015
 R3, R15 ARE BOURNS TRIMPOT 260P-1-102
 PARTS LIST IS A-PL-6852-0-1

REVISIONS		
CHK	CHG NO.	REV.
REV. B	REDR.	
00001		B

THIS SCHEMATIC IS FURNISHED ONLY FOR TEST AND MAINTENANCE PURPOSES. THE CIRCUITS ARE PROPRIETARY IN NATURE AND SHOULD BE TREATED ACCORDINGLY. COPYRIGHT 1965 BY DIGITAL EQUIPMENT CORPORATION



RELAY BOTTOM VIEW
POSITIVE POTENTIAL APPLIED TO POSITIVE TERMINALS(+) WILL CLOSE THE CONTACTS AS SHOWN IN DIAGRAM ABOVE.

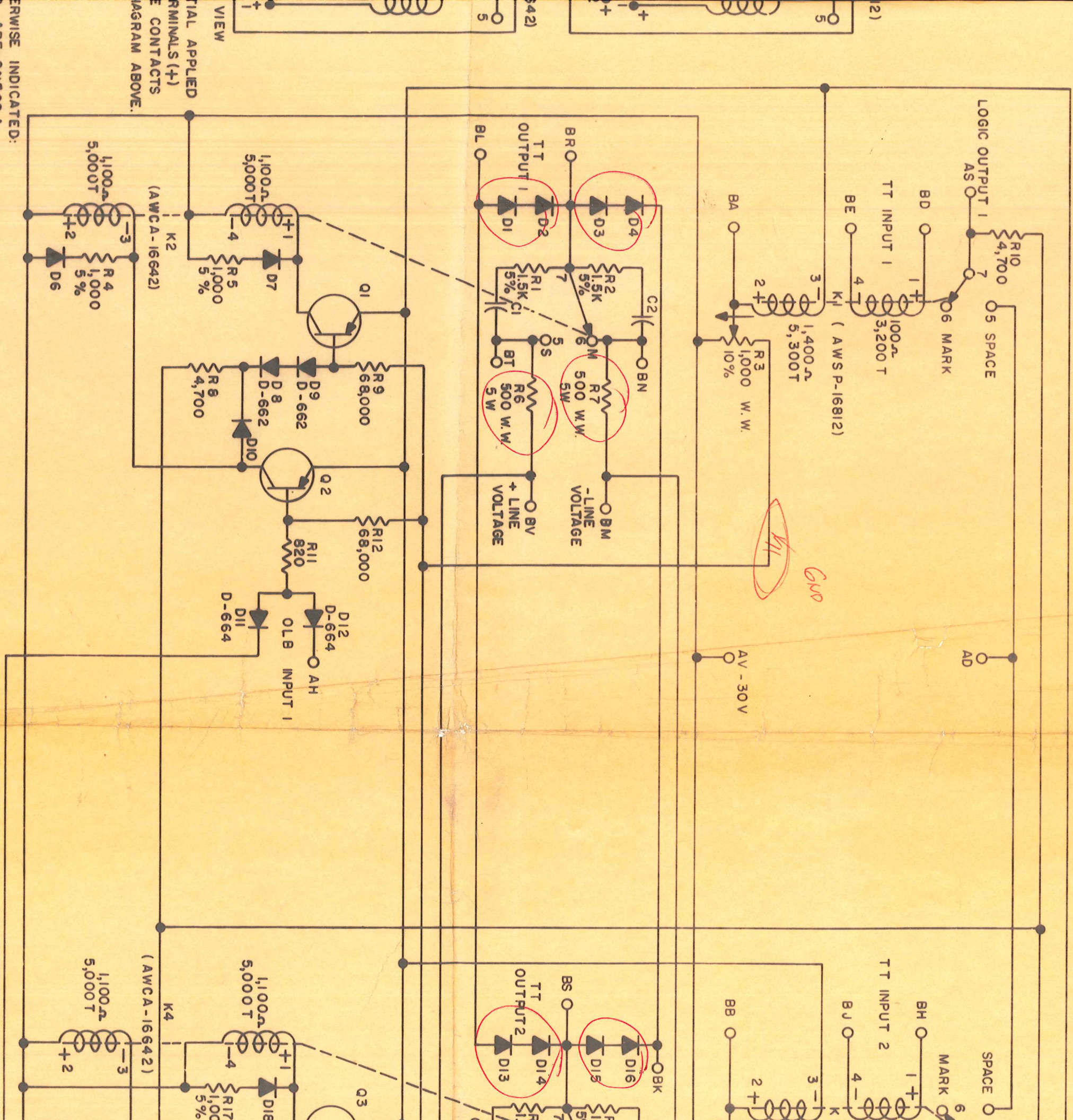
UNLESS OTHERWISE INDICATED:
TRANSISTORS ARE 2N398 A
CAPACITORS ARE .0022 MFD; 220V
RESISTORS ARE 1/4W, 10%
DIODES ARE D-670
R6, R7, R20, R21 ARE SFRAGUE 423E 5015
R3, R15 ARE BOURNS TRIMPOT 260P-1-102

PARTS LIST IS A-PL-6852-0-1

REVISIONS		
CHK	CHG NO.	REV.
REV.	BY	REDR.
	00001	B

DEC FORM NO
DRC 102

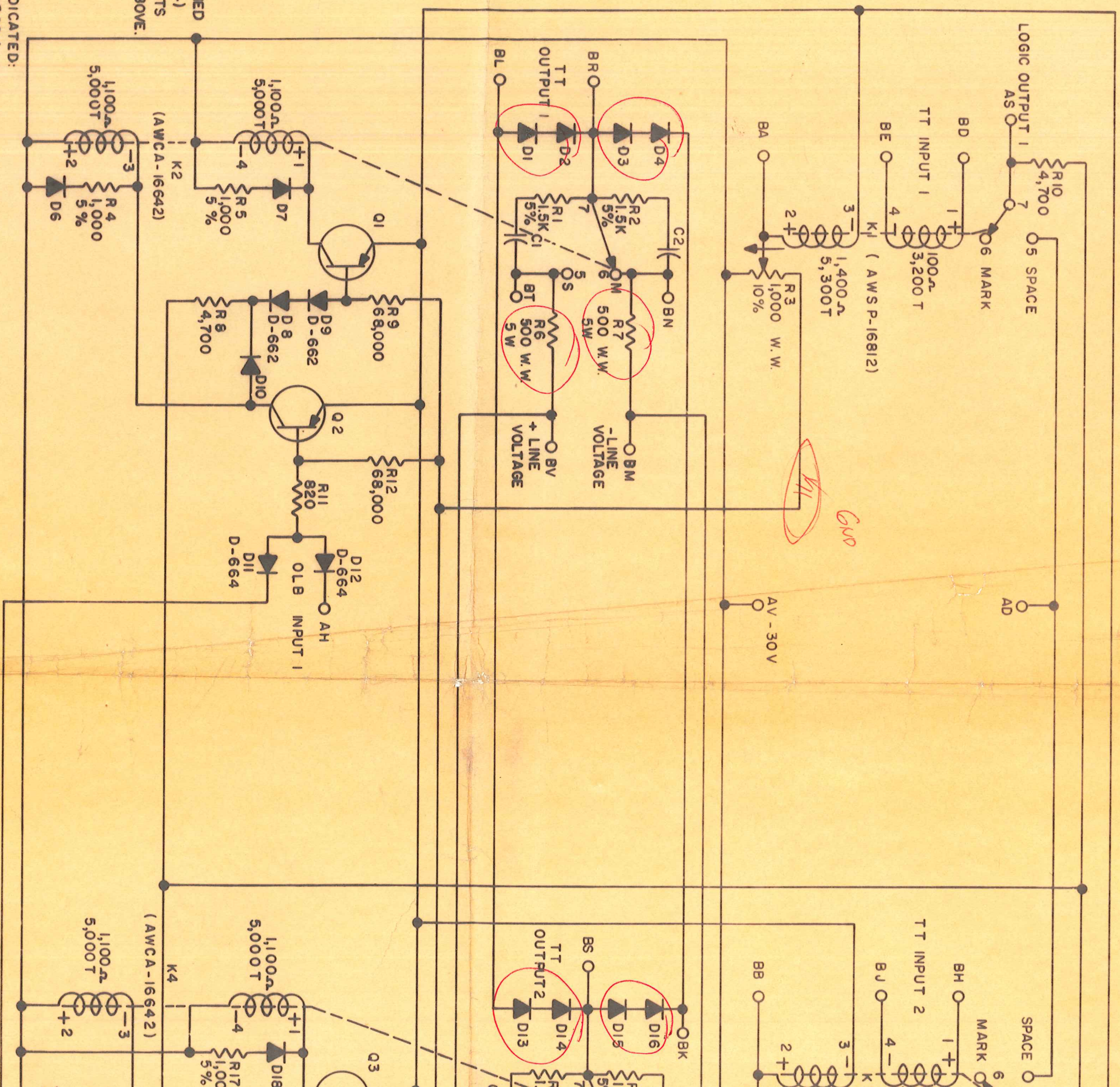
FOR TEST AND MAINTENANCE PURPOSES. THE
 SHOULD BE TREATED ACCORDINGLY.
 CORPORATION



ERWISE INDICATED:
 S ARE 2N398 A
 ARE .0022 MFD; 220V
 ARE 1/4W, 10%
 E D-670
 R21 ARE SFRAGUE 423E 5015
 BOURNS TRIMPOT 260P-1-102
 IS A-PL-6852-0-1

DRN.	DATE	TRANSISTOR & DIODE CONVERSION
I. MAHN	8-20-65	DEC
CHK'D R. SILVERMAN	8-25-65	2N398A
ENG. R. TRINGALE	8-24-65	D662 IN645
PROJ.	DATE	D664 IN3606
		D670 IN3553

FOR TEST AND MAINTENANCE PURPOSES, THE
 WIRE AND SHOULD BE TREATED ACCORDINGLY.
 CORPORATION



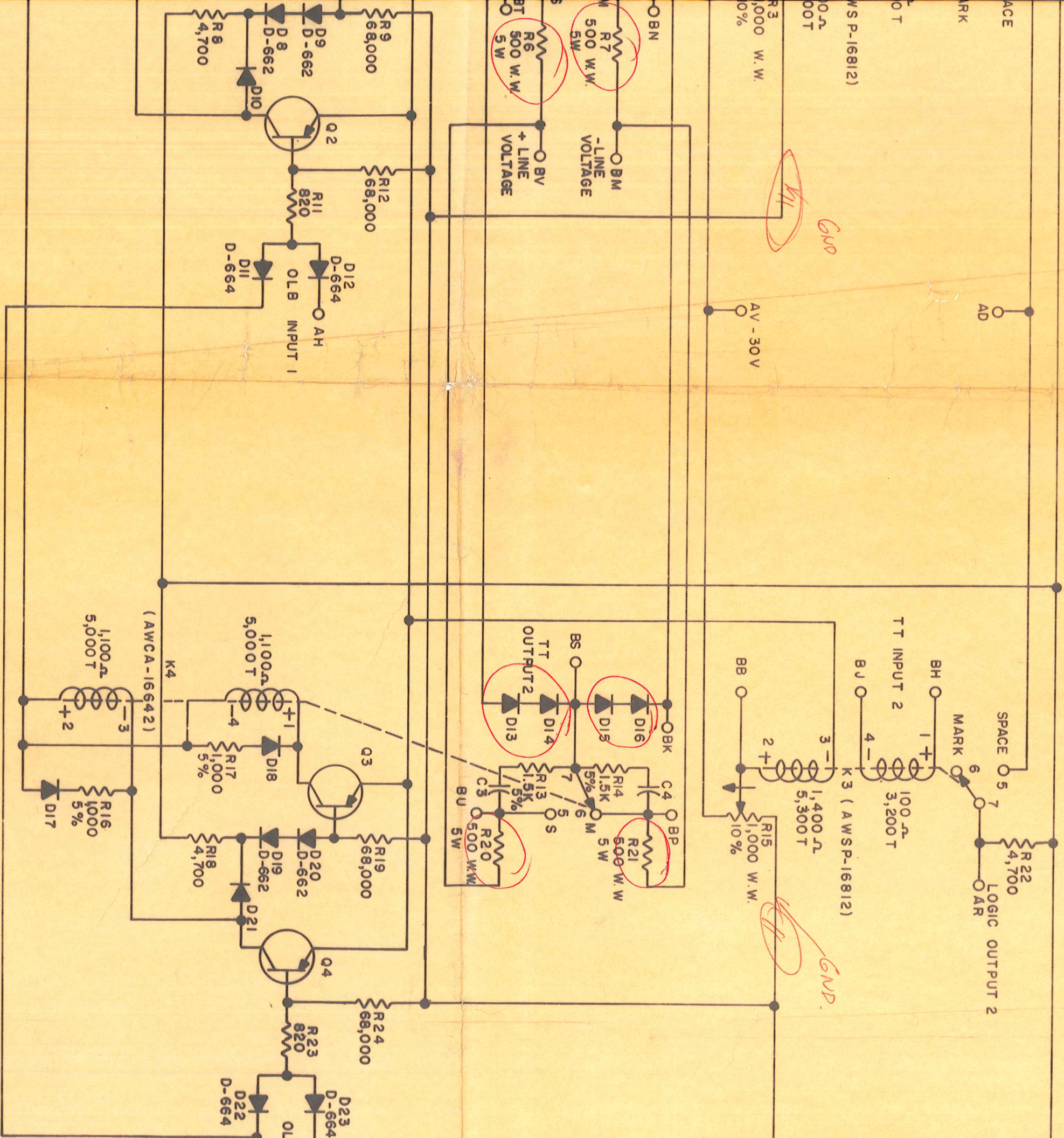
TERMINALS (+)
 CONTACTS
 DIAGRAM ABOVE.

ERWISE INDICATED:
 ARE 2N398 A
 ARE .0022 MFD; 220V
 RE 1/4W, 10%
 D-670

R21 ARE SPRAGUE 423E 5015
 BOURNS TRIMPOT 260P-1-102

IS A-PL-6852-0-1

ORIGINATOR		DATE		TRANSISTOR & DIODE CONVERTER	
1. MAHN	9-20-65	DEC	DEC	EIA	DEC
CHK'D R. SILVERMAN	8-25-65	2N398A	SAME		
ENG. R. TRINGALE	8-24-65	D662	IN645		
PROD.		D664	IN3606		
		D670	IN3553		

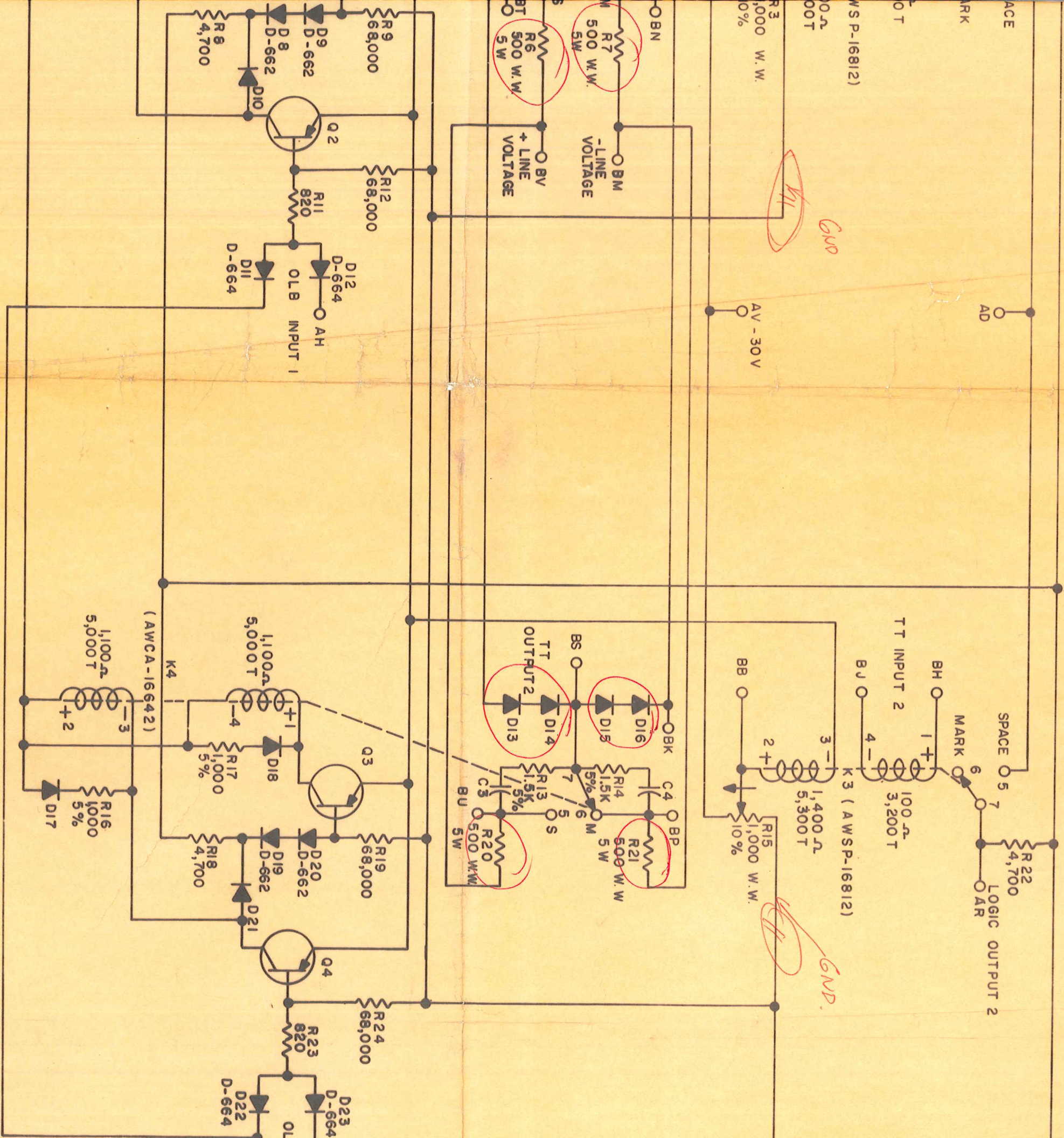


DRN.	I. MAHN	DATE	8-20-65
CHK'D	R SILVERMAN	DATE	8-25-65
ENG.	R TRINGALE	DATE	8-24-65
PROT.		DATE	

TRANSISTOR & DIODE CONVERSION CHART			
DEC	EIA	DEC	EIA
2N398A	SAME		
D662	1N645		
D664	1N3608		
D670	1N3553		

digital
EQUIPMENT CORPORATION
MAYNARD, MASSACHUSETTS

TITLE	DUAL LEVEL
SIZE	C
CODE	CS
PRINTED CIRCUIT	



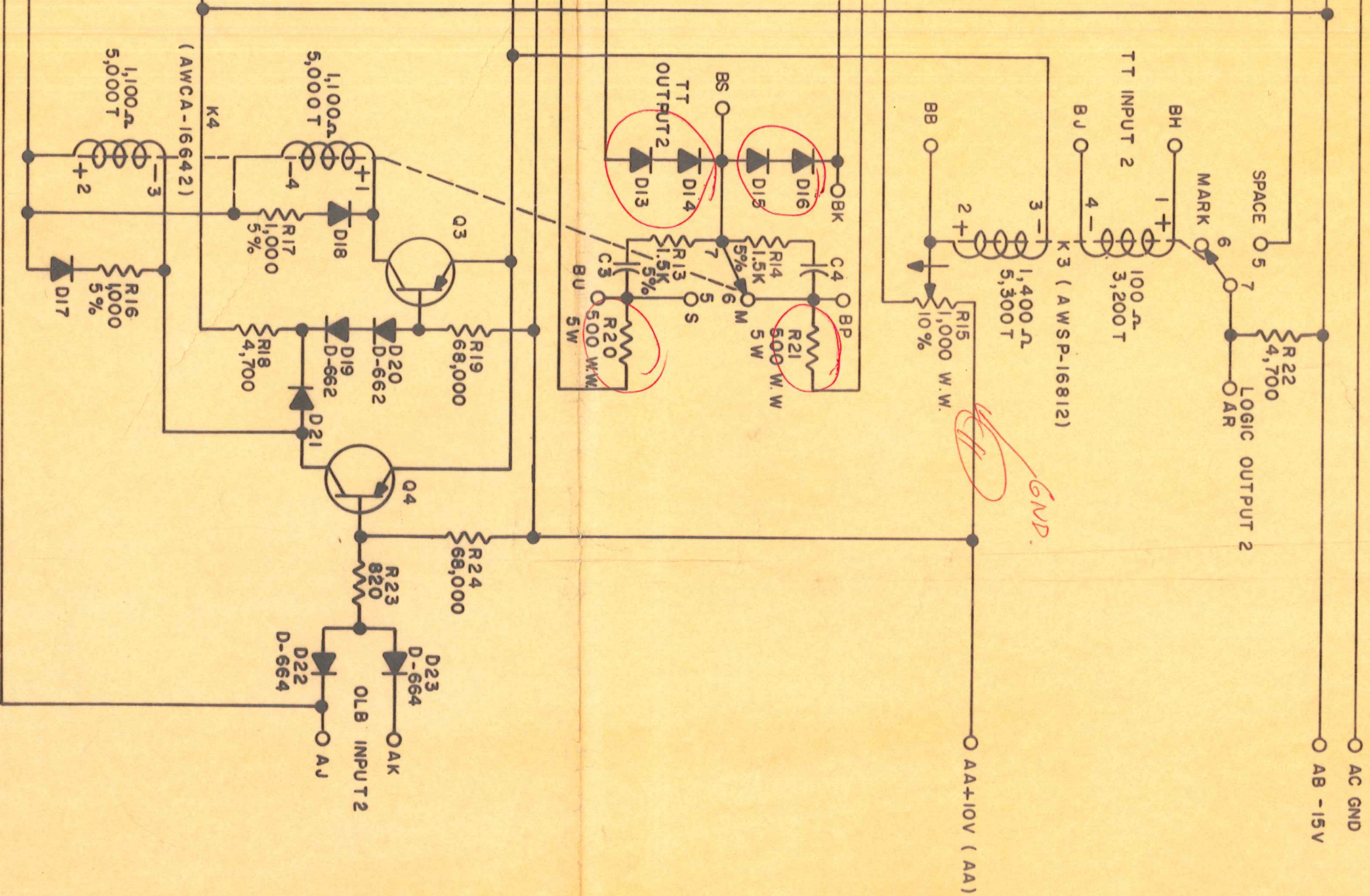
DRN.	DATE
I. MAHN	8-20-65
CHK'D	DATE
R. SILVERMAN	8-25-65
ENG.	DATE
R. TRINGALE	8-24-65
PROT.	DATE

TRANSISTOR & DIODE CONVERSION CHART	
DEC	EIA
2N398A	SAME
D662	1N845
D664	1N3606
D670	1N3553

digital
EQUIPMENT CORPORATION
MAYNARD, MASSACHUSETTS

TITLE	LEVEL
DUP	C
SIZE	CODE
C	C3
PRINTED CIRCUIT	

DIST. 824, Y34



DRN	I. MAHN	DATE	9-20-65
CHK'D	R. SILVERMAN	DATE	9-25-65
ENG.	R. TRINGALE	DATE	9-24-65
PROJ.		DATE	

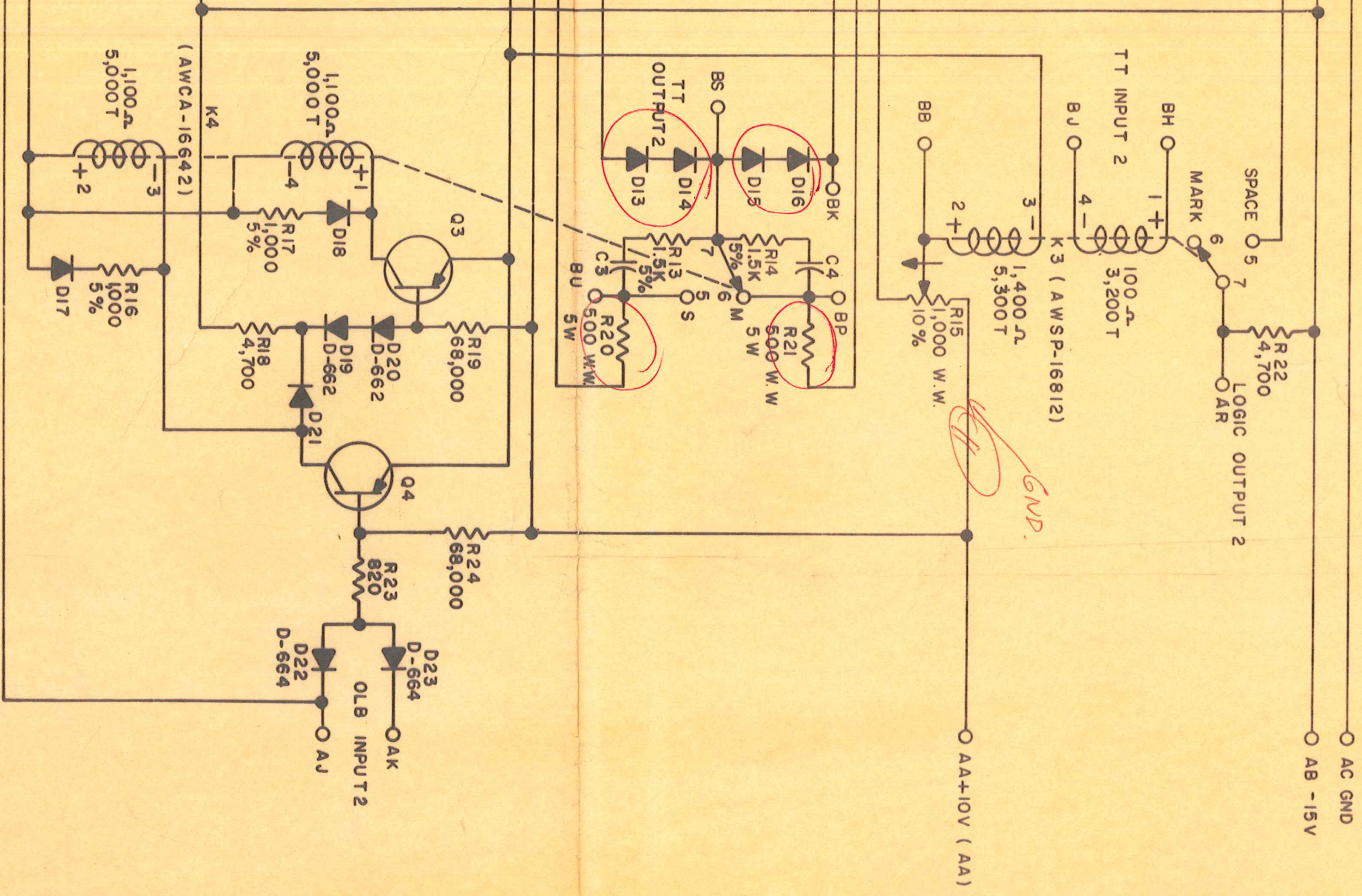
TRANSISTOR & DIODE CONVERSION CHART		
DEC	EIA	DEC
2N398A	SAME	
D662	1N645	
D664	1N3606	
D670	1N3553	

digital
EQUIPMENT CORPORATION
MAYNARD, MASSACHUSETTS

TITLE		DUAL TELEGRAPH	
LEVEL CONVERTER		G852	
SIZE	CODE	NUMBER	REV
C	C3	G852-0-1	B
PRINTED CIRCUIT REV.			C

SIZE	CODE	NUMBER	REV
C	CS	G852-0-1	B

DIST. 824, Y34, Y35³ PINK



DRN.	I. MAHN	DATE	8-20-65
CHK'D	R. SILVERMAN	DATE	8-25-65
ENG.	R. TRINGALE	DATE	8-24-65
PROJ.		DATE	

TRANSISTOR & DIODE CONVERSION CHART			
DEC	EIA	DEC	EIA
2N398A	SAME		
D662	IN645		
D664	IN3606		
D670	IN3553		

digital
EQUIPMENT CORPORATION
MAYNARD, MASSACHUSETTS

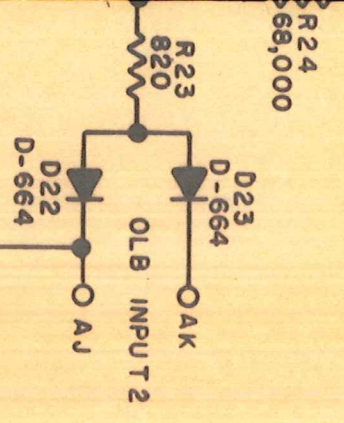
TITLE		DUAL TELEGRAPH	
LEVEL CONVERTER		G852	
SIZE	CODE	NUMBER	REV
C	CS	G852-0-1	B
PRINTED CIRCUIT REV.			C

DIST. 824, Y34, Y35 3 PINK

SIZE	CODE	NUMBER	REV
C	CS	G852-0-1	B

○ AC GND
○ AB -15V

○ AA+10V (AA)



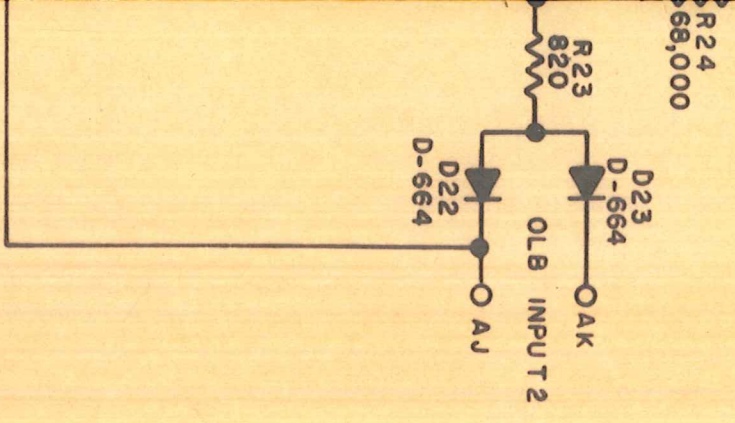
SIZE	CODE	NUMBER	REV
C	CS	G852-0-1	B

TITLE			
DUAL TELEGRAPH			
LEVEL CONVERTER G852			
SIZE	CODE	NUMBER	REV
C	CS	G852-0-1	B
PRINTED CIRCUIT REV.			
C			

DIST. 824, Y34, Y35 3 PINK

○ AC GND
○ AB -15V

○ AA+10V (AA)



SIZE	CODE	NUMBER	REV
C	CS	G852-0-1	B

TITLE	
DUAL TELEGRAPH	
LEVEL CONVERTER G852	
SIZE	NUMBER
C	G852-0-1
REV	B

PRINTED CIRCUIT REV. C

DIST. 824, Y34, Y35 3 PINK