

This drawing and specifications, herein, are the property of Digital Equipment Corporation and shall not be reproduced or copied or used in whole or in part as the basis for the manufacture or sale of items without written permission.

NOTES:

1. KYII-D CONSOLE IS CONNECTED TO THE KDII-A BY MEANS OF TWO BCØØR CABLES TO CONNECTORS J1 AND J2. BOTH LOGIC SIGNALS AND POWER ARE SO CONDUCTED. INSTALLATION INFORMATION IS NOTED ON SCHEMATIC AND ETCHED CIRCUIT BOARD.
2. AC POWER CONTROL IS PROVIDED BY SWITCH CLOSURE ON CONNECTORS J3 AND J4.

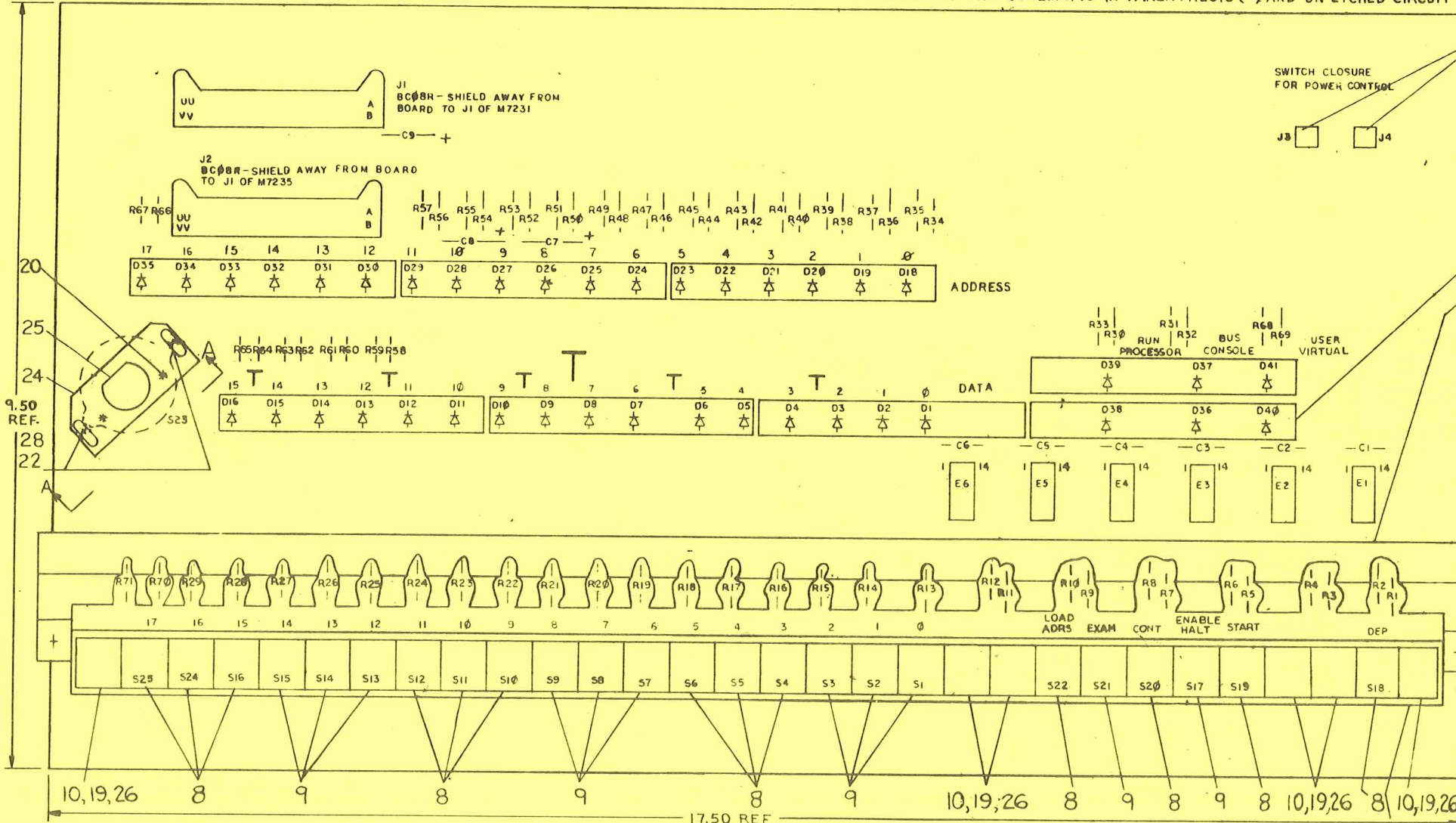
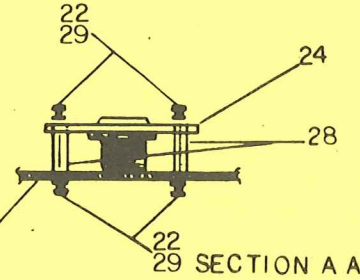
3. PROCESSOR SIGNAL PREFIX NOTATION (K5-7 FOR EXAMPLE) IDENTIFIES THE SIGNAL SOURCE (PRINT AND MODULE). THE FIRST NUMBER AFTER THE K INDICATES THE MODULE PRINT SET, WHILE THE SECOND INDICATES THE SHEET WITHIN THE SET. SIGNALS WITH A "BUS" PREFIX REPRESENTS A "WIRED OR" SITUATION, AND MULTIPLE SOURCES FOR THE SIGNAL CAN EXIST. THE KYD PREFIX INDICATES SIGNALS ORIGINATING ON THE KYII-D CONSOLE BOARD.
4. PANEL INFORMATION ON SWITCH AND LIGHT FUNCTIONS ARE NOTED IN THE SCHEMATIC IN PARENTHESIS () AND ON ETCHED CIRCUIT BOARD

5. UNLESS OTHERWISE NOTED: RESISTANCE IS IN OHMS; CAPACITANCE IS IN PICOFARADS.
6. FOR SWITCH HANDLE REMOVAL TOOL, SEE C-MD-9606145-0-0

LEGEND

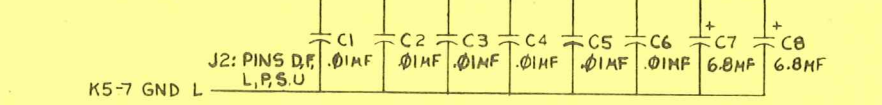
VARIATION	ITEM 8	ITEM 9	USED ON
5409701-0	1210796-01, ROSE	1210796-02, MAGENTA	KYII-D
5409701-1	1210796-08, DC BLUE	1210796-09, AC RED	KYII-DJ

* ITEM 23, KEPS NUT, IS MOUNTED AGAINST BRACKETS ON SIDE I.



9.50 REF.

K5-7 SWITCH +5V H



QTY	REF DESIGNATION	DESCRIPTION	PART NO.	ITEM NO.
4		1/6 INT. TOOTH LOCKWASHER	9006633	29
2		1/4 AF x 1/16 #6-32 HEX SPACER	9006838	28
2		EYELET G57-5	9009000	27
6		LOCKWASHER #8 INT. TOOTH	9006634	26
1	S23	LOCK - 3 POS - 90° - INDEX	1210754	25
1	S23	BRACKET, SWITCH (LOCK)	7411613	24
4		NUT, #6-32 KEPS	9006560	23
8		SCREWS, SLOTTED BINDER HD, 6-32x5/8	9006021-4	22
1		BRACKET, SUPPORT	7409895	21
2		NUT, 4-40 x 3/16 AF x 1/16 THK	9009280	20
6		SCR #32 x 3/16 SELF-TAP	9009540	19
16		SCR #4 x 5/16 LG SELF TAPPING	9009236	18
2	J3, J4	TAB, FASTON	9007112	17
1		SWITCH BRACKET	7409270-01	16
6	E1 THRU E6	I.C. DEC 7410	1405576	15
40	R30 THRU R69	RES 180, 1/4 W ±5%	1301322	14
31	R1 THRU R29, R70, R71	RES 1K, 1/4 W ±5%	1300365	13
5	S10 THRU S22	SWITCH, SPDT, MOMENTARY	1210841	12
19	S1 THRU S17, S24, S25	SWITCH, SPDT, SUSTAINED	1210840	11
6		KNOB, GREY	1210825	10
11		KNOB	SEE LEGEND	9
13		KNOB	SEE LEGEND	8
8		LED, HOLDER, LONG	1210795-02	7
1	S23	SWITCH ROTARY	1210753	6
2	J1, J2	CONN 40 PIN	1209941	5
40	DI THRU D16, D18 THRU D41	DIODE LIGHT EMITTING SSL-22L2	1110864	4
3	C7, C8, C9	CAP 6.8µF 35V, ±10% TANT	1005306	3
6	C1 THRU C6	CAP .01µF 100V, ±20%	1001610	2
1		ETCHED CIRCUIT BOARD	5009700	1

IC TYPE	GND	+5V
GND AND 5V ARE USUALLY PIN 7 AND 14 RESPECTIVELY. EXCEPTIONS ARE STATED ABOVE.		
IC PIN LOCATIONS		

REV	DATE	BY	CHK	DESCRIPTION
1	3-11-71	W. MINOR		
2	5-4-74	W. MINOR		
3	2-18-74	W. MINOR		
4	2-6-74	W. MINOR		
5	1-17-74	F. ELLA		
6	1-10-74	J. O'LOUGHLIN		
7	1-10-74	J. O'LOUGHLIN		
8	1-4-75	J. O'LOUGHLIN		
9	7-20-73	J. O'LOUGHLIN		
10	10-30-72	J. O'LOUGHLIN		
11	4/16/73	R. P. HALE		
12	10/30/72	J. O'LOUGHLIN		
13	10-30-72	J. O'LOUGHLIN		
14	8/21/72	J. O'LOUGHLIN		
15	8/21/72	J. O'LOUGHLIN		
16	8/21/72	J. O'LOUGHLIN		
17	8/21/72	J. O'LOUGHLIN		
18	8/21/72	J. O'LOUGHLIN		
19	8/21/72	J. O'LOUGHLIN		
20	8/21/72	J. O'LOUGHLIN		
21	8/21/72	J. O'LOUGHLIN		
22	8/21/72	J. O'LOUGHLIN		
23	8/21/72	J. O'LOUGHLIN		
24	8/21/72	J. O'LOUGHLIN		
25	8/21/72	J. O'LOUGHLIN		
26	8/21/72	J. O'LOUGHLIN		
27	8/21/72	J. O'LOUGHLIN		
28	8/21/72	J. O'LOUGHLIN		
29	8/21/72	J. O'LOUGHLIN		

FIRST USED ON OPTION MODEL PDP 11/40	ETCH BOARD REV F	PARTS LIST
---	---------------------	------------

DRN: R. B. ... DATE: 7-15-72
 CHKD: ... DATE: 6/27/72
 ERS: ... DATE: 1/27/72
 PRD: ... DATE: 6/27/72
 PRG: ... DATE: 6/27/72
 NEXT HIGHER ASSY: KYII-D

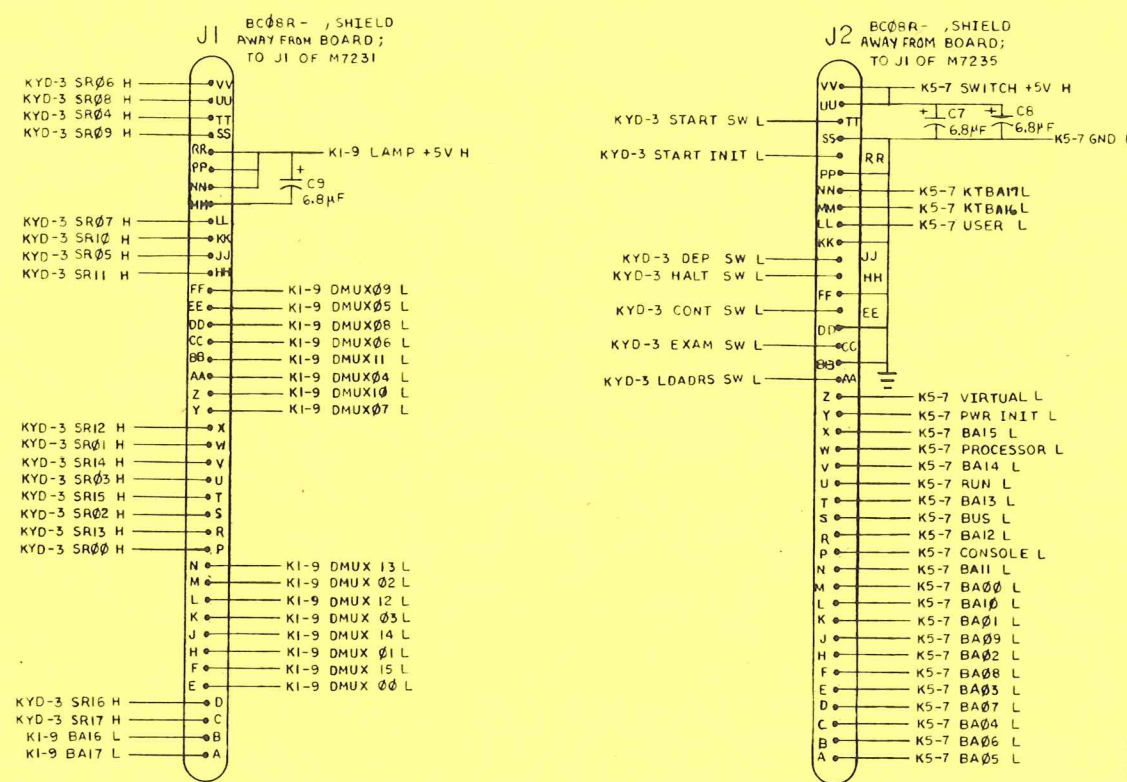
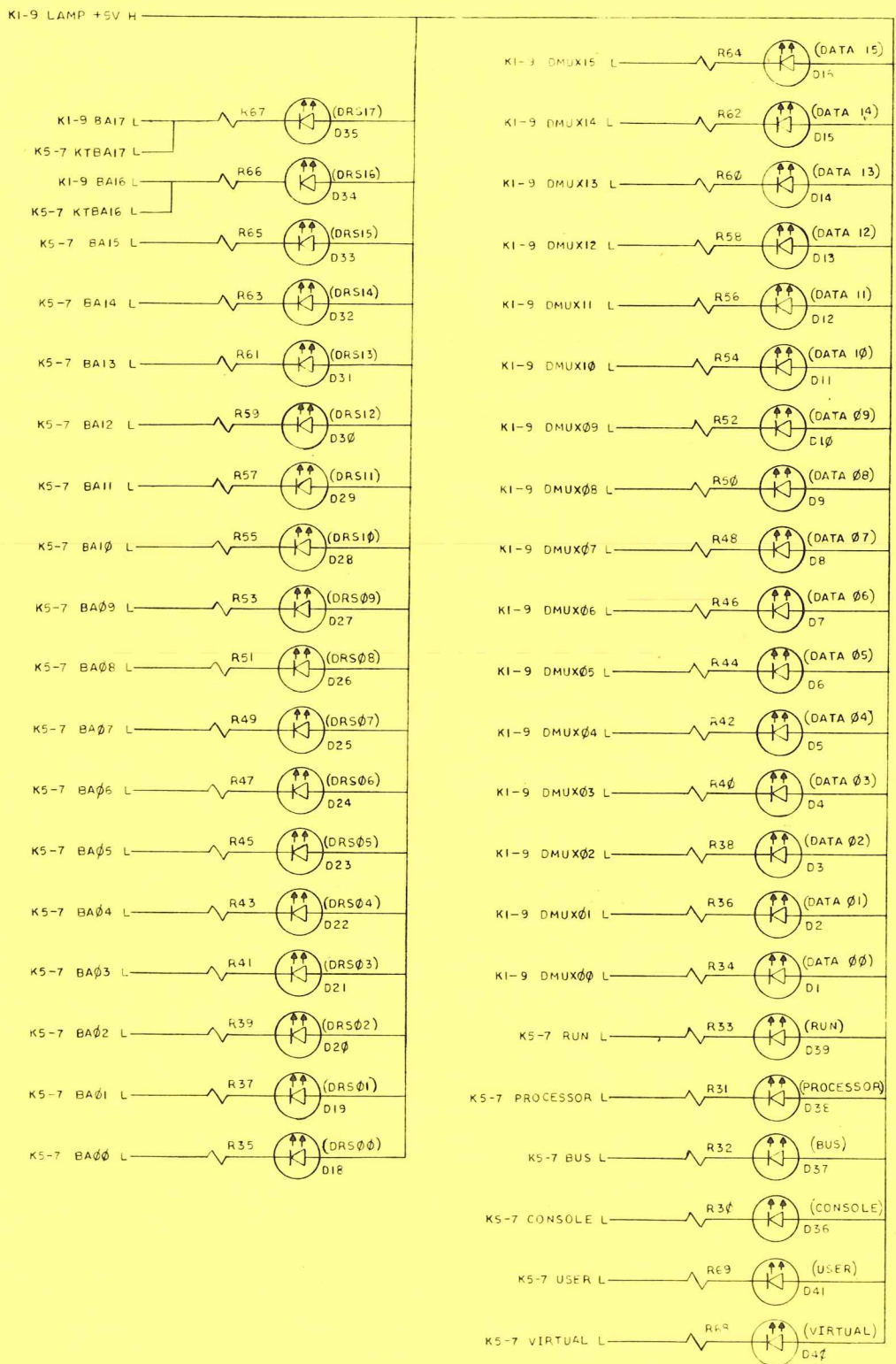
SEMICONDUCTOR CONVERSION CHART

DEC NO.	EIA NO.	DEC NO.	EIA NO.

SCALE: 1 OF 3 SHEET

SIZE CODE	NUMBER	REV.
D CS	5409701-0-1	K

This drawing and specifications herein are the property of Digital Equipment Corporation and shall not be reproduced or copied or used in whole or in part as the basis for the manufacture or sale of items without written permission.



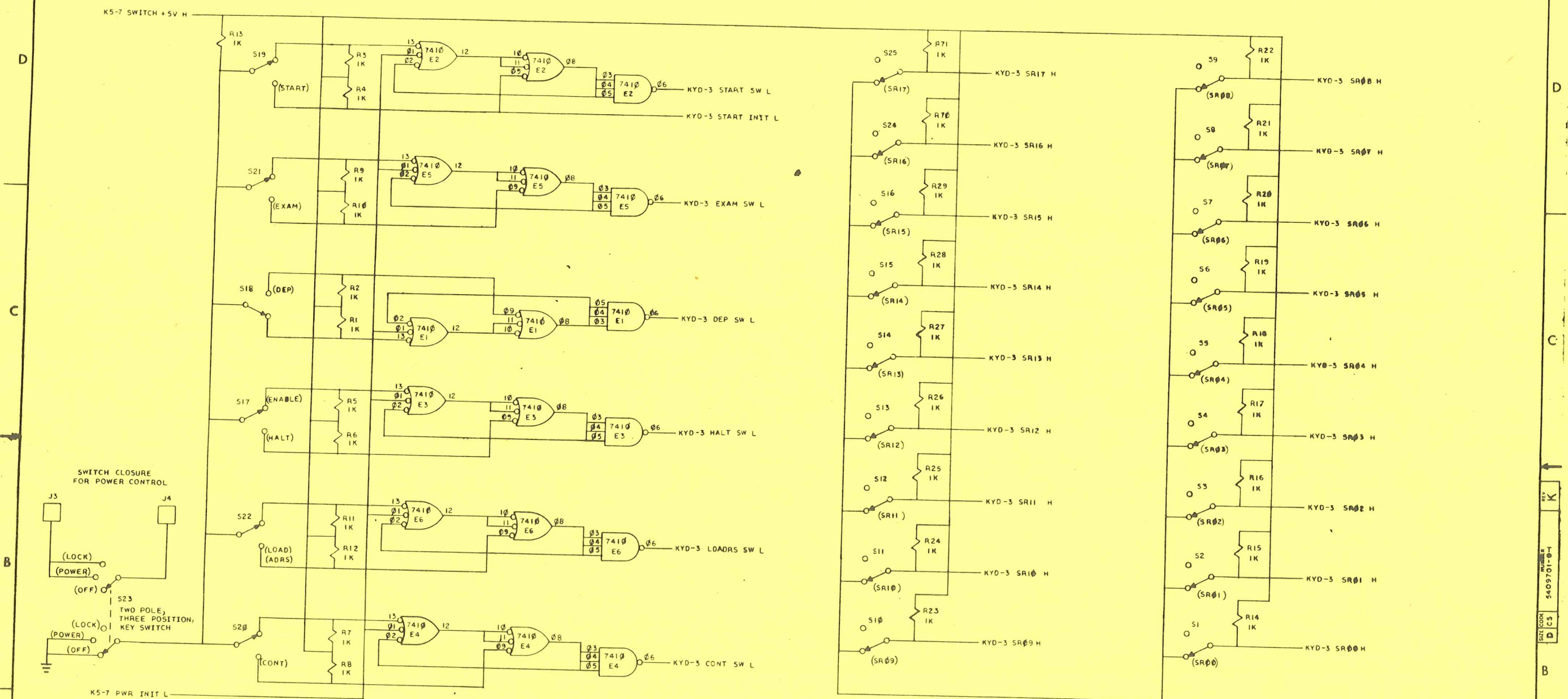
NOTES:
 1. CONSOLE LABELS ARE NOTED IN PARENTHESIS.
 2. CABLE CONNECTION INFORMATION IS NOTED ON SCHEMATIC AND ETCHED BOARD. CABLES MUST BE CONNECTED WITH SHIELD AWAY FROM BOARD.

BRUNING 40 51	REV
CHK	CHANGE NO

FIRST USED ON OPTION/MODEL	QTY.	DESCRIPTION	PART NO.	ITEM NO.
PDP 11				
PARTS LIST				
UNLESS OTHERWISE SPECIFIED DIMENSION IN INCHES TOLERANCES	DRN	DATE	digital EQUIPMENT CORPORATION MAYNARD MASSACHUSETTS	
DECIMALS	CHK'D	DATE	TITLE	
ANGLES	ENG	DATE	KY11-D CONSOLE	
.XXX = .005	BOB ENG	DATE	DISPLAY	
.XX = .02	DATE	DATE	KYD-2	
.X = .1	DATE	DATE	MATERIAL	
REMOVE BURRS AND BREAK SHARP CORNERS SURFACE QUALITY	DATE	DATE	NEXT HIGHER ASSY.	
			KY11-D	
			SIZE	NUMBER
			D CS	5409701-0-1
				P.V.
				K
FINISH	SCALE	SHEET	DIST.	
	2 OF 3	2		

REV. NO. 5409701-0-1
 CS
 D

This drawing and specifications, herein, are the property of Digital Equipment Corporation and shall not be reproduced or copied in whole or in part as the basis for the manufacture or sale of items without written permission.



NOTES:
 1. SWITCHES ARE SHOWN IN THEIR NON-ACTIVE OR ZERO POSITION; FOR ALL DATA SWITCHES (SR) THIS IS DOWN; FOR ALL CONTROL SWITCHES, EXCEPT DEP, THIS IS UP.
 2. CONSOLE LABELS ARE SHOWN IN PARENTHESIS

REVISIONS
 CHANGE NO
 DATE

FIRST USED ON OPTION/MODEL	QTY.	DESCRIPTION	PART NO.	ITEM NO.
PDP 11				
PARTS LIST				
UNLESS OTHERWISE SPECIFIED DIMENSION IN INCHES TOLERANCES	DRN A. Padilla	DATE 2-15-72	EQUIPMENT CORPORATION MAYNARD, MASSACHUSETTS	
DECIMALS	CHUD J. Chud	DATE 6/27/72	TITLE KY11-D CONSOLE	
ANGLES	DATE 6/27/72	DATE 6/27/72	MATERIAL NEXT HIGHER ASSY.	
.XXX - .005	DATE 6/27/72	DATE 6/27/72	FINISH	
.XX - .02	DATE 6/27/72	DATE 6/27/72	SCALE	
X - .1	DATE 6/27/72	DATE 6/27/72	SHEET 3 OF 3	
REMOVE BURRS AND BREAK SHARP CORNERS SURFACE QUALITY	DATE 6/27/72	DATE 6/27/72	DIST	
MATERIAL			SIZE CODE D CS	NUMBER 5409701-0-1
			REV K	