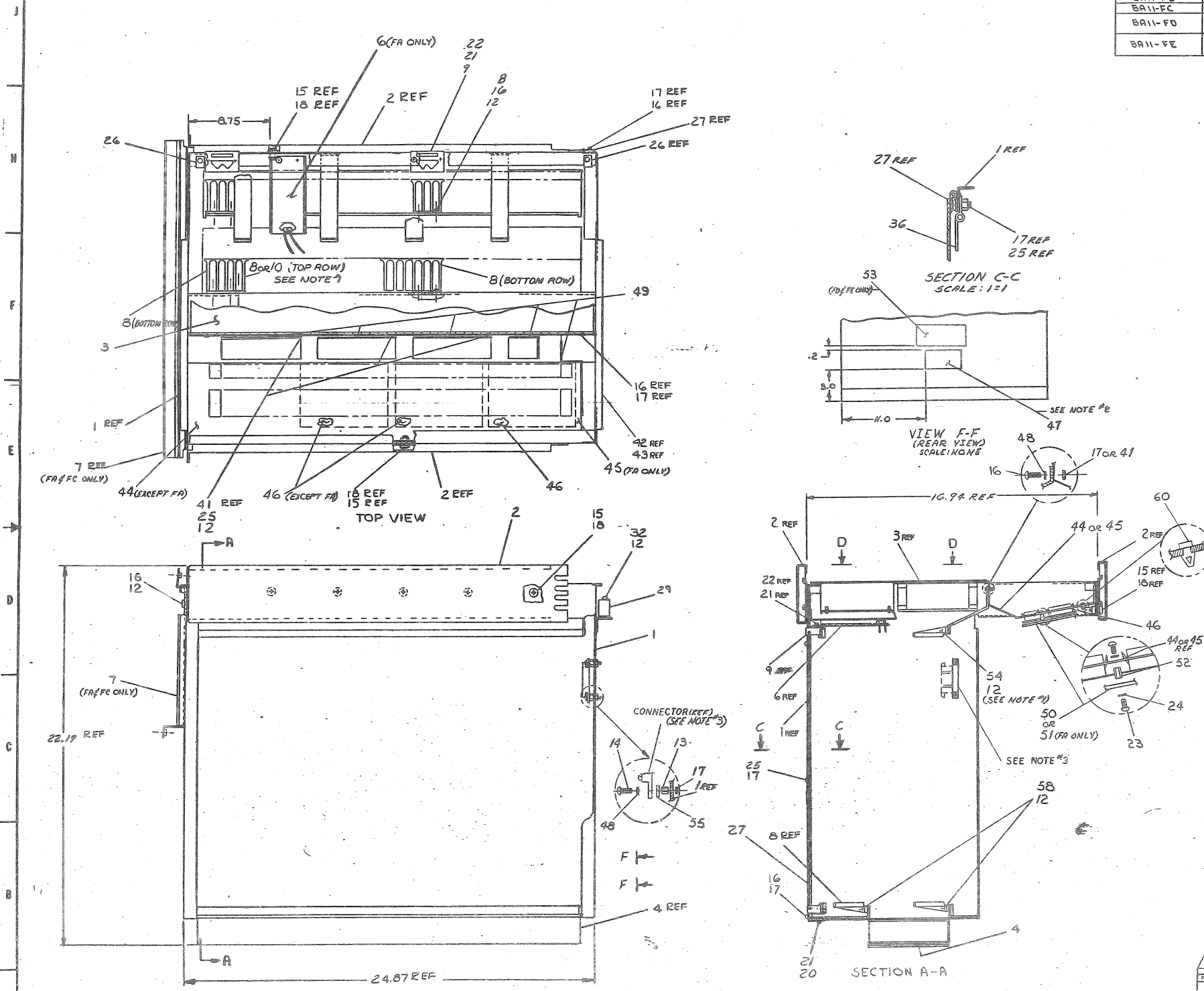


THIS DRAWING AND SPECIFICATIONS HEREAFTER ARE THE PROPERTY OF DIGITAL EQUIPMENT CORPORATION AND SHALL BE RETURNED TO THE COMPANY IN ORIGINAL OR XEROX COPY AS REQUESTED BY THE CUSTOMER OR SHALL BE DESTROYED BY THE COMPANY UPON REQUEST OF THE CUSTOMER. DRAWING NUMBER: 00017-8

LEGEND	
NUMBER	VARIATION
BA11-FA	BASIC 11/45
BA11-FB	EXPANDER
BA11-FC	BASIC 11/45
BA11-FD	FIELD EXPANSION BOX ASSY 115V
BA11-FE	FIELD EXPANSION BOX ASSY 230V

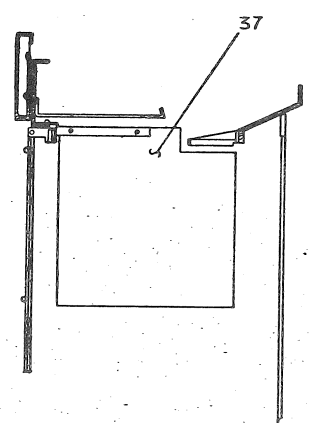
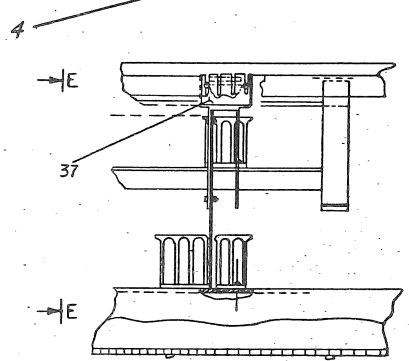
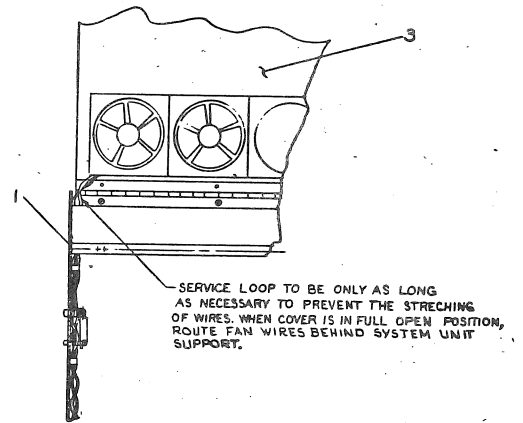
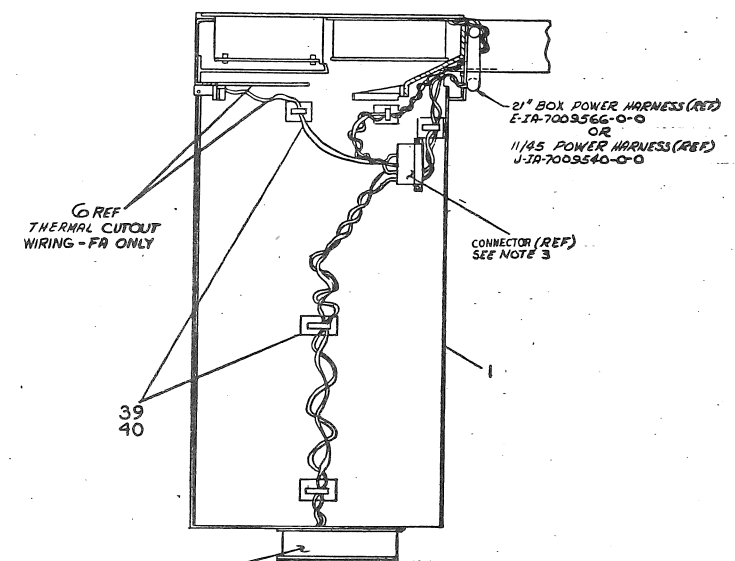
NOTES
SEE SHEET #2 FOR ALL NOTES



QTY	PART NO.	DESCRIPTION	UNIT
4	4	CABLE TIE MOUNT	9007867 60
1	1	BA11 ACCESSORY KIT	BA11-FA 59
1	1	SCR PHL HD PAN #8-32x3/16	9006034-1 58
1	1	DECAL, PWR. DISTR.	9007435-0 57
2	2	WASH. FLAT, 200 ADL, 1/16"	9006662 55
22	22	SCR PHL HD PAN #8-32x1/8	9006035-1 54
1	1	EXPANDER BOX DETAIL	BA11-FB-0 53
6	6	SPACER, 1/16" DIA, 1/4" L	9006853 52
1	1	NUCKLE GUARD (115V)	BA11-FD-0 51
1	1	NUCKLE GUARD (230V)	BA11-FE-0 50
1	1	GROMMET, NYLON	9007621 49
6	6	WASHER EXT TOOTH #8	9008072 48
1	1	DECAL, MECHANICAL STATUS	BA11-FD-0 47
3	3	PWR. DISTRIBUTION BOARD	DC-53091A-0 46
1	1	PWR. DISTRIBUTION PANEL (115V)	DA-11522-0 45
1	1	PWR. DISTRIBUTION PANEL (230V)	DA-23022-0 44
1	1	DECAL	DC-53091A-0 43
1	1	DECAL	DC-53091B-0 42
3	3	NUT, HEX #8-32	9006561 41
1	1	ACCESSORY KIT LIST	BA11-FA REF
1	1	ACCESSORY KIT LIST	BA11-FD REF
3	3	MOUNT, ADH. BACK.	9008264 40
3	3	TIE WRAPS	9007880 39
22	22	SCR PHL HD PAN #4-40x1/2	9006013 38
1	1	BRKT, CABLE PROTECTION	7009070-0 37
1	1	HINGE, DOOR RETAINER	BA11-FD-0 36
1	1	EXP. BOX KIT STRIP ASSY	BA11-FD-0 35
1	1	SCR PHL HD PAN #8-32x3/8	9006036-1 34
16	16	CLIP, PLATE	9006038-0 33
2	2	SCR PHL HD PAN #8-32x1/8	9007854-1 32
1	1	PLATE, POWER SUPPORT	BA11-FD-0 31
3	3	CABLE CLAMP & STRAP	BA11-FD-0 30
1	1	CABLE STRAP	BA11-FD-0 29
1	1	DOOR, LEFT SIDE	BA11-FD-0 27
2	2	CLIP ON RECEPT #1-10x1/8	9008196 26
3	3	SCR PHL HD PAN #8-32x1/8	9006034-1 25
12	12	WASHER INT TOOTH #6	9006633 24
12	12	SCR PHL HD PAN #8-32x3/16	9006022-1 23
22	22	SCR PHL HD PAN #4-40x3/8	9006011-1 22
44	44	WASHER INT TOOTH #4	9006632 21
2	2	SCR PHL HD PAN #4-40x3/8	9006011-1 20
1	1	NUT, KEPS #8-32	9006563 19
10	10	SCR PHL HD PAN #10-32x1/4	9006073-1 18
10	10	NUT, KEPS #8-32	9006563 17
8	8	SCR PHL HD PAN #8-32x3/16	9006035-1 16
10	10	NUT, KEPS #10-32	9006565 15
2	2	SCR PHL HD PAN #8-32x3/8	9006041-1 14
2	2	SPACER, 3/8" DIA, 1/4" LGAL	9006818 13
81	81	WASHER INT TOOTH #8	9006634 12
2	2	PLATE, PROTECTIVE	BA11-FD-0 11
11	11	CARD GUIDE RIBLOCK	CD-71042-0 10
22	22	EXTRACTOR CARD GUIDE	D-PS-12104-0 9
22	22	CARD GUIDE	CD-PS-12105-0 8
1	1	BEZEL MTG BEKT.	BA11-FD-0 7
1	1	THERMAL CUTOUT BRKT. ASSY	CD-10001-0 6
1	1	COPE MEMBER DIST. BLK.	D-PS-12106-0 5
1	1	FAN ASSY (BOTTOM)	DA-10007-0 4
1	1	FAN ASSY (TOP)	DA-10008-0 3
1	1	SLIDE CHASSIS 23" TRAVEL	D-SC-12045-0 2
1	1	CHASSIS	BA11-FD-0 1

DATE: 11/45
 DRAWN BY: [Signature]
 CHECKED BY: [Signature]
 TITLE: MOUNTING BOX ASSY
 EQUIPMENT CORPORATION
 SCALE: 1:1
 SHEET: 8 OF 11

THIS DRAWING AND SPECIFICATIONS, BEING THE PROPERTY OF DIGITAL EQUIPMENT CORPORATION, SHALL NOT BE REPRODUCED OR COPIED IN WHOLE OR IN PART WITHOUT THE WRITTEN PERMISSION OF DIGITAL EQUIPMENT CORPORATION. COPYRIGHT ©, 1973



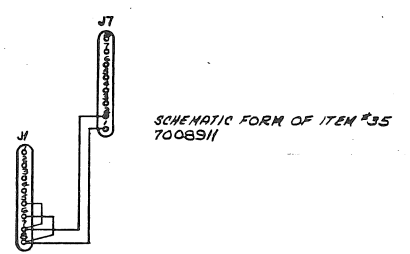
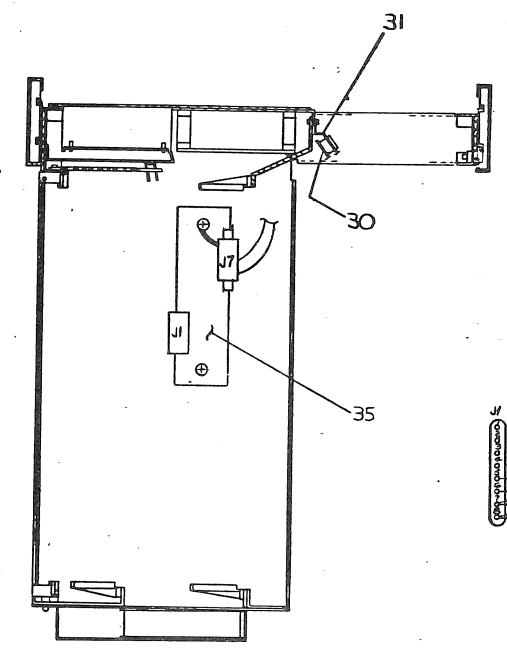
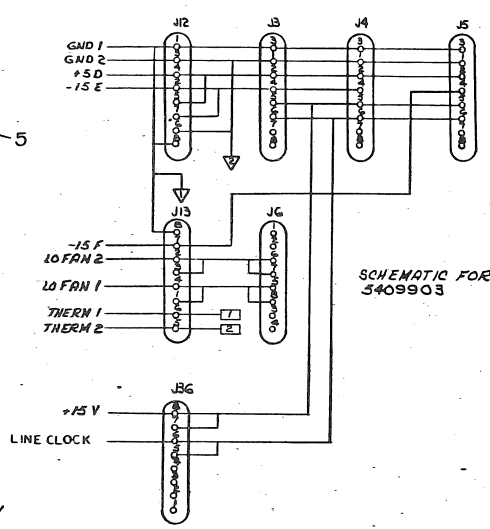
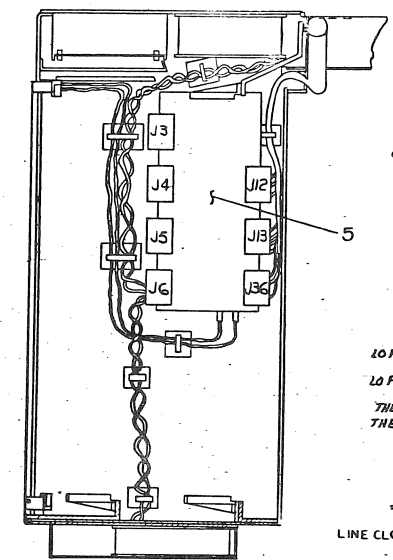
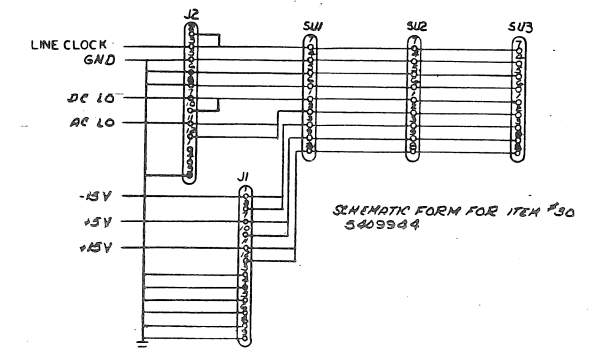
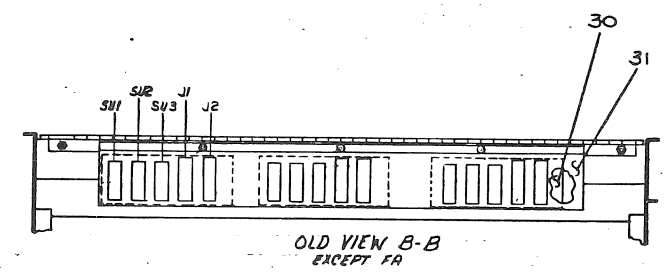
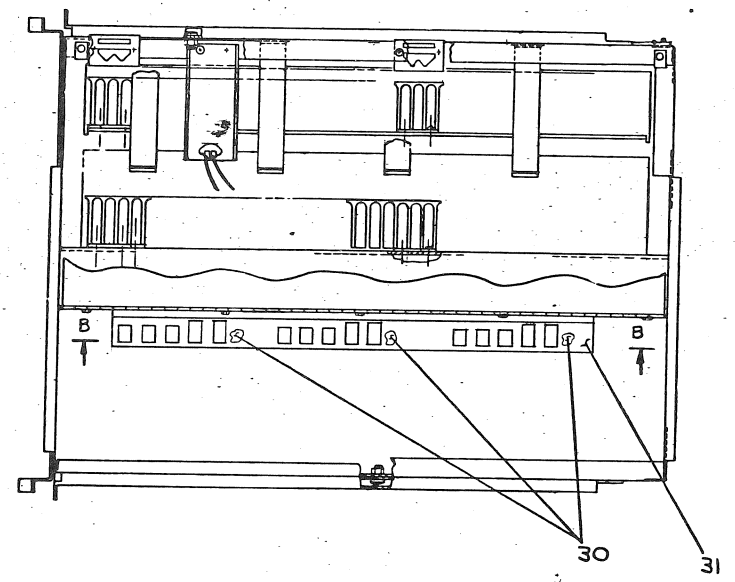
- NOTES:
- CARD GUIDE MOUNTING - THE BOTTOM TWO ROWS (22 GUIDES - ITEM 8) ARE MOUNTED SO THAT THE FIRST GUIDE IS IN LINE WITH HOLES 1, 2 & 3 IN THE FRONT OF THE BOX AND REMAINING GUIDES ARE MOUNTED EDGE TO EDGE (DO NOT SKIP SPACES). THE BAL-FA TOP ROW CONSISTS OF FIVE CARD GUIDES (ITEM 8) WITH THE FIRST ONE IN LINE WITH HOLES 2, 3 & 4 FOLLOWED BY SIX REWORKED GUIDES (ITEM 10) MOUNTED EDGE TO EDGE. DO NOT PUT CARD GUIDE SCREWS IN THE FOLLOWING HOLES AS THEY ARE USED FOR SYSTEM UNITS: SKIP HOLES 2, 14, 26, 31, 36 & 41 IN BAL-FA TOP AND BOTTOM ROWS. FOR BAL-FB, FC, FD & FE THE TOP ROW CONSISTS OF 11 REWORKED CARD GUIDES (ITEM 10) WITH THE FIRST ONE MOUNTED IN LINE WITH HOLES 1, 2 & 3 AND REMAINING GUIDES MOUNTED EDGE TO EDGE. DO NOT PUT CARD GUIDE SCREWS IN THE FOLLOWING HOLES: 2, 7, 12, 17, 22, 27, 32, 37 & 42 TOP AND BOTTOM ROWS. THEY WILL BE USED FOR MOUNTING SYSTEM UNITS. SOME CHASSIS ASSY'S MAY HAVE ONE EXTRA CARD GUIDE MOUNTING HOLE IN TOP BRACKET. HOLE FOR POSITION 1 IS ALWAYS 1.44" FROM FRONT OF CHASSIS ASSY.
 - MECHANICAL STATUS DECAL MUST SHOW BOX VARIATION AND REVISION.
 - CONNECTOR IS SHOWN FOR REFERENCE ONLY, IT IS INSTALLED AT NEXT HIGHER ASSY.

FIRST USED OR OPTION/MODEL	QTY.	DESCRIPTION	PART NO.	REV.
UNLESS OTHERWISE SPECIFIED DIMENSIONS IN INCHES				
TOLERANCES		DATE	BY	
DIMENALS		DAVIS	11-8-73	
JEK		COOK	11-15-73	
MORRIS		MORRIS	11-15-73	
ENG.		11-15-73		
REWORK NUMS AND DETAIL				
ECORR. POLY. #				
MATERIAL				
FINISH				

PARTS LIST		TITLE
DIGITAL EQUIPMENT CORPORATION		MOUNTING BOX ASSY
REV. NUMBER	REV.	
EJA	1	
BALF-F-1	P	

THIS DRAWING AND SPECIFICATION ARE THE PROPERTY OF DIGITAL EQUIPMENT CORPORATION. NO PARTS THEREOF ARE TO BE REPRODUCED OR TRANSMITTED IN ANY FORM OR BY ANY MEANS, ELECTRONIC OR MECHANICAL, INCLUDING PHOTOCOPYING, RECORDING, OR BY ANY INFORMATION STORAGE AND RETRIEVAL SYSTEM, WITHOUT PERMISSION IN WRITING FROM DIGITAL EQUIPMENT CORPORATION. COPYRIGHT © 1973

NOTE: THIS SHEET FOR REFERENCE ONLY. ALL ITEM NUMBERS ARE NO LONGER USED IN PRESENT PROD. ITEMS 5, 30, 31, 35 WERE DELETED BY NEW POWER DISTRIBUTION ECO.



REFERENCE ONLY

SEE NOTE THIS PAGE

1	1	1	1	EXP BOX AC STRIP ASSY	SJA-7008P1-0-0	35
1	1	1	1	PLATE POWER SUPPORT	DND-7005G2-0-0	31
3	3	3	3	EXPANDER BOX POWER DIST	EDP-5409314-0-0	30
1	1	1	1	CORE MEM POWER DIST BD	DIP-5409903-0-0	5

QTY / VARIATION	DESCRIPTION	PART NO.	ITEM NO.
1	EXP BOX AC STRIP ASSY	SJA-7008P1-0-0	35
1	PLATE POWER SUPPORT	DND-7005G2-0-0	31
3	EXPANDER BOX POWER DIST	EDP-5409314-0-0	30
1	CORE MEM POWER DIST BD	DIP-5409903-0-0	5

UNLESS OTHERWISE SPECIFIED	DRG	DATE	DESCRIPTION
DRAWN	K. DAVIS	11-24-72	digital EQUIPMENT CORPORATION
CHECKED	C. COOK	12-15-72	
DESIGNED	M. MORRIS	12-15-72	
PROJ. ENG.	P. DELAGI	12-15-72	
PROD. ENG.	R. GORMAN	1-11-73	
REMOVED BURRS AND BREAK SHARP			
CHECKED SURFACE QUALITY			

MATERIAL	FINISH	SCALE	SHEET	OF	REV.
		1/2	10	11	P