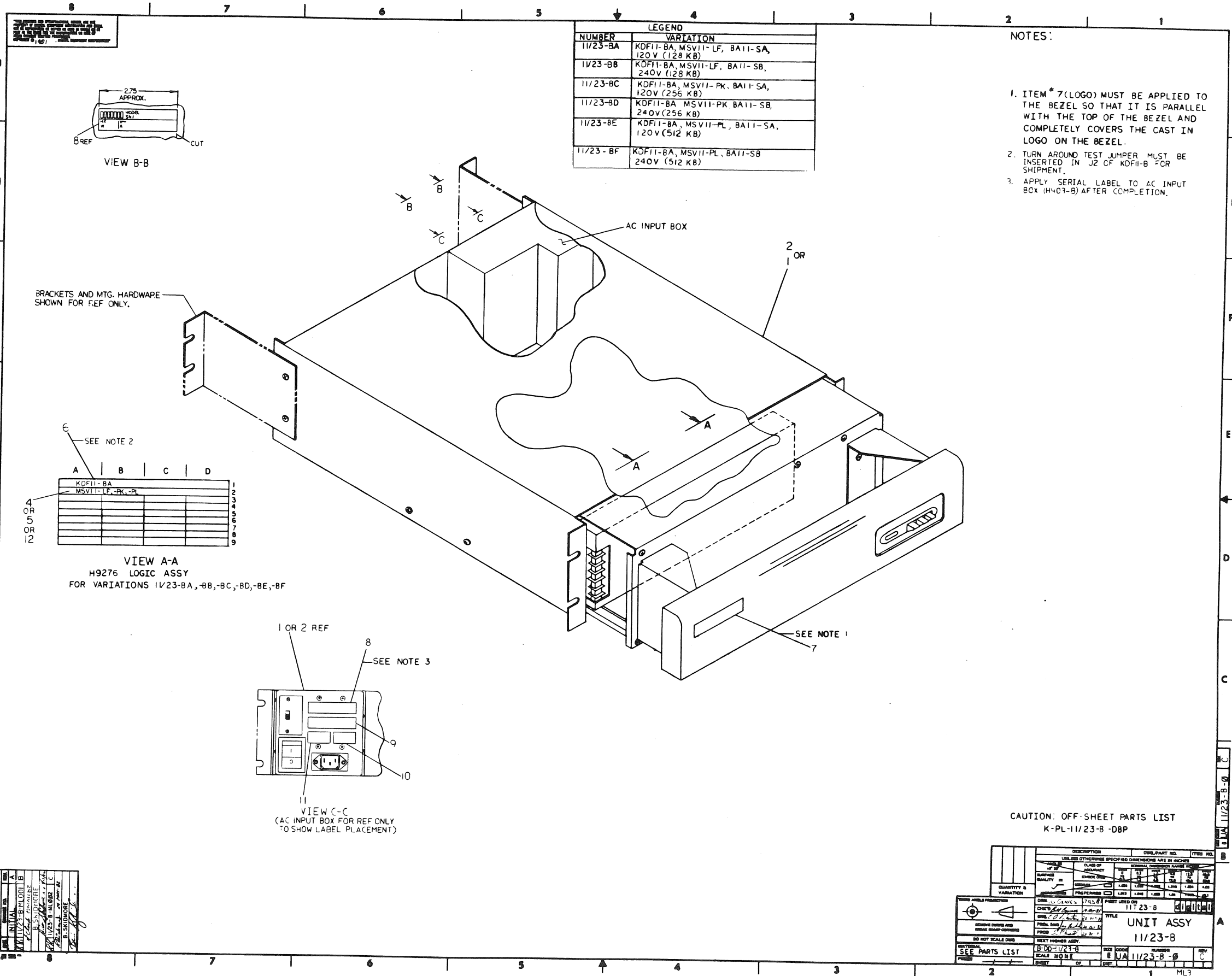


TITLE	11/23B	SIZE	CODE	NUMBER	REV
	DRAWING DIRECTORY	B	DD	11/23-B	B
		SHEET 2 OF 3			



NUMBER	VARIATION
11/23-BA	KDFII-BA, MSVII-LF, BAII-SA, 120V (128 KB)
11/23-BB	KDFII-BA, MSVII-LF, BAII-SB, 240V (128 KB)
11/23-BC	KDFII-BA, MSVII-PK, BAII-SA, 120V (256 KB)
11/23-BD	KDFII-BA, MSVII-PK, BAII-SB, 240V (256 KB)
11/23-BE	KDFII-BA, MSVII-PL, BAII-SA, 120V (512 KB)
11/23-BF	KDFII-BA, MSVII-PL, BAII-SB, 240V (512 KB)

- NOTES:
- ITEM 7 (LOGO) MUST BE APPLIED TO THE BEZEL SO THAT IT IS PARALLEL WITH THE TOP OF THE BEZEL AND COMPLETELY COVERS THE CAST IN LOGO ON THE BEZEL.
 - TURN AROUND TEST JUMPER MUST BE INSERTED IN J2 OF KDFII-B FOR SHIPMENT.
 - APPLY SERIAL LABEL TO AC INPUT BOX (H407-B) AFTER COMPLETION.

INITIALS	DATE
DESIGNED BY	DATE
DRAWN BY	DATE
CHECKED BY	DATE
APPROVED BY	DATE

CAUTION: OFF-SHEET PARTS LIST
K-PL-11/23-B-D8P

QUANTITY & VARIATION	DESCRIPTION	ORIG. PART NO.	UNIT NO.
1	UNIT ASSY	11/23-B	010000
1	AC INPUT BOX	H407-B	

UNIT ASSY
11/23-B

SCALE: 1:1

REV: 1

DATE: 11/23-8

BY: [Signature]

ML3

LINE ITEM	DOCUMENT NUMBER	PART NUMBER	DESCRIPTION	QUANTITY PER VARIATION						
				BA	BB	BC	BD	BE	BF	
1	1	E-UA-BA11-S-0	OBA11-SA	5.2" BOX,H9276-B,H403-B,H7861,CO	1	-	1	-	1	-
2	2	E-UA-BA11-S-0	OBA11-SB	5.2" BOX,H9276-B,H403-B,H7861,CO	-	1	-	1	-	1
3	3		MSV11-PF	*** THIS ITEM IS NOT USED ***	-	-	-	-	-	-
4	4	A-PL-MSV11-P-0	MSV11-PK	256KB Q-BUS MOS PARITY MEMORY (M	-	-	1	1	-	-
5	5	A-PL-MSV11-P-0	MSV11-PL	512KB Q-BUS MOS PARITY MEMORY (M	-	-	-	-	1	1
6	6	K-PL-KDF11-B-DBP	KDF11-BA	M8189(DCF11-AA,2 SLU,CLOCK),KTF1	1	1	1	1	1	1
7	7		3617954-02	LABEL,PDP 11/23-B LOGO PLUS	1	1	1	1	1	1
8	8		3617674-00	LABEL,SERIAL & POWER,UNIVERSAL	1	1	1	1	1	1
9	9		3617880-09	LABEL,QSA,FCC	1	1	1	1	1	1
10	10	A-DC-7416197-0-0	7416197-01	DECAL	1	1	1	1	1	1
11	11		3613211-01	DECAL,CLEAR PREPRINTED CSA 1-1/4	1	1	1	1	1	1
12	12	A-PL-MSV11-L-0	MSV11-LF	CSR 64K 18BIT MOS RAM,SINGLE VOL	1	1	-	-	-	-

REVISION HISTORY			BASIC PART NO: 11/23		DRN: G. GRAVES		DATE: 18-FEB-81		D I G I T A L			
ENG	ECO NUMBER	REV	SECTION A OF A		CHK'D: B. BROWN		DATE: 5-OCT-81		TITLE PARTS LIST			
---	INITIAL	A	SECTION. VARIATION INDEX		DES.ENG.: T. PITMAN		DATE: 8-OCT-81		UNIT ASSY 11/23B			
BS	11/23-B-ML001	B	[A] BA, BB, BC, BD, BE, BF		RESP.ENG.: C. VALENTINE		DATE: 8-OCT-81		DOCUMENT NUMBER			
BS	11/23-B-ML002	C	[B]		MFG.ENG.: W. HALL		DATE: 3-OCT-81		SIZE CODE NUMBER REV			
			[C]		ASSEMBLY NUMBER:		TOP DOCUMENT NUMBER:		FILE NAME: EDIT #			
			[D]		E-UA-11/23-B-0		#B-DD-11/23-B		22338C.PLS 18			
			[E]									
			[F]									

THIS DRAWING AND SPECIFICATIONS HEREIN, ARE THE PROPERTY OF DIGITAL EQUIPMENT CORPORATION AND SHALL NOT BE REPRODUCED OR COPIED OR USED IN WHOLE OR IN PART AS THE BASIS FOR THE MANUFACTURE OR SALE OF ITEMS WITHOUT WRITTEN PERMISSION. COPYRIGHT (C) 1982, DIGITAL EQUIPMENT CORPORATION

digital**PARTS LIST**

QUANTITY / VARIATION

NOTES:

DRN. G. GRAVES
DATE 17-SEP-81DES. ENG. T. PITMAN
DATE 20-OCT-81MFG. ENG. W. HALL
29-OCT-81CHK'D. B. BROWN
DATE 1-OCT-81RESP. ENG. C. VALENTINE
DATE 20-OCT-81NEXT HIGHER DOC.
B-DD-11/23-B

ITEM NO.	DRAWING NO.	PART NO.	DESCRIPTION	QUANTITY / VARIATION											REFERENCE DESIGNATORS		
				11/23-BA	11/23-BB	11/23-BC	11/23-BD	11/23-BE	11/23-BF								
1		EK-23BMB-UG	11/23 MOUNTING BOX TECHNICAL MANUAL	1	1	1	1	1	1								
2		EK-KDF1B-UG	KDF11-B USER'S GUIDE	1	1	1	1	1	1								
3		EK-MSV0P-UG	MSV11-P USER'S GUIDE	-	-	1	1	1	1								
4		EB-20175-20	MICROCOMPUTER INTERFACES HANDBOOK	1	1	1	1	1	1								
5	B-TC-11/23-B-1	MP01234	11/23-B FIELD MAINTENANCE PRINT SET	1	1	1	1	1	1								
6	B-TC-BALL-S-1	MP01233	BALL-S FIELD MAINTENANCE PRINT SET	1	1	1	1	1	1								
7	B-TC-KDF11-B-1	MP01236	KDF11-B FIELD MAINTENANCE PRINT SET	1	1	1	1	1	1								
8	B-TC-MSV11-P-1	MP01239	MSV11-P FIELD MAINTENANCE PRINT SET	-	-	1	1	1	1								
9	B-TC-MSV11-L-1	MP01238	MSV11-L FIELD MAINTENANCE PRINT SET	1	1	-	-	-	-								
10		EK-MSVOL-UG	MSV11-L USER'S GUIDE	1	1	-	-	-	-								

ECO NO.
INIT A
ML002 B"THIS DRAWING AND SPECIFICATIONS, HEREIN, ARE THE PROPERTY OF DIGITAL EQUIPMENT CORPORATION AND SHALL NOT BE REPRODUCED OR COPIED OR USED IN WHOLE OR IN PART AS THE BASIS FOR THE MANUFACTURE OR SALE OF ITEMS WITHOUT WRITTEN PERMISSION.
COPYRIGHT © 1981 DIGITAL EQUIPMENT CORPORATION"TITLE
SHIPPING LIST 11/23BASSY. NO.
NONESIZE
B PLNUMBER
11/23-BREV.
B

SECTION 1 OF 1

SHEET 1 OF 1

